

2019 - 2020

PROPOSED BUDGET'S
REQUIRED STATE-SUPPLIED INFORMATION

Packet 2 of 2

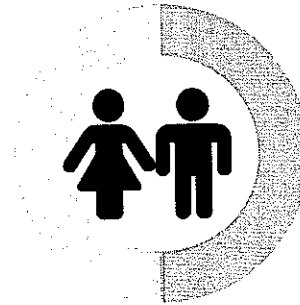
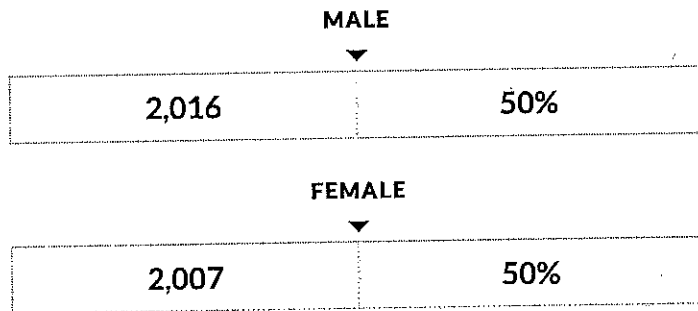
EAST GREENBUSH CENTRAL SCHOOL DISTRICT

These enrollment data are collected as part of NYSED's Student Information Repository System (SIRS). These counts are as of "BEDS Day" which is typically the first Wednesday in October. Available are enrollment counts for public and charter school students by various demographics for the 2017 - 18 school year. For nonpublic school enrollment data please see the Non-Public School Enrollment and Staff information on our Information and Reporting Services webpage.

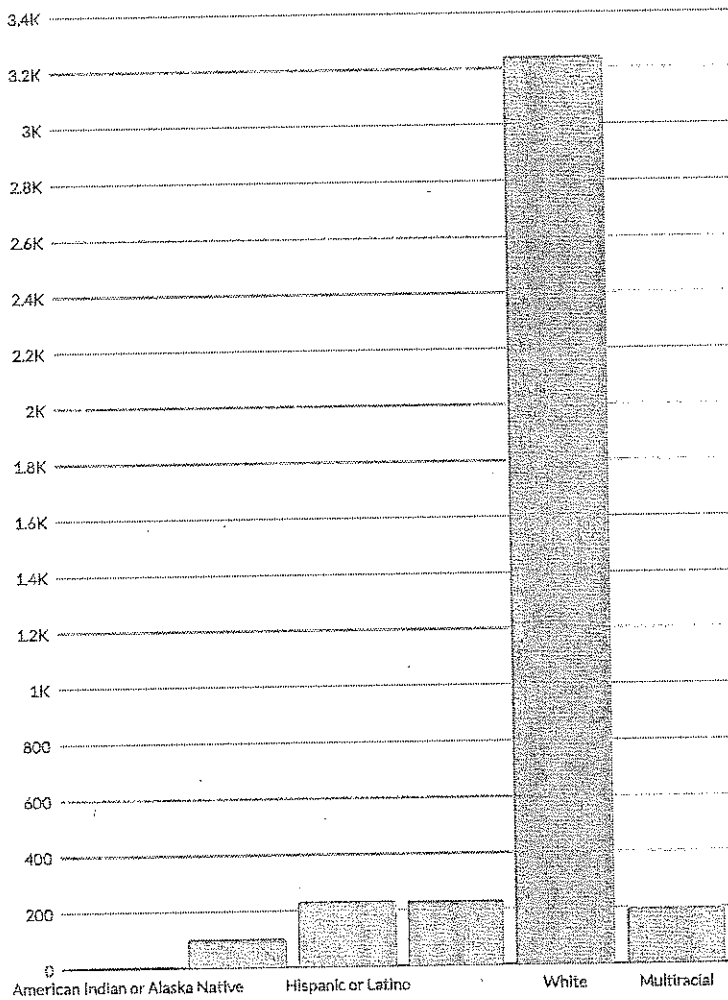
EAST GREENBUSH CSD ENROLLMENT (2017 - 18)

K-12 Enrollment: 4,023

ENROLLMENT BY GENDER



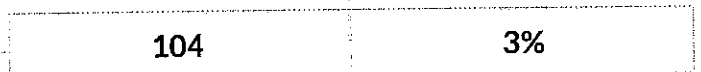
ENROLLMENT BY ETHNICITY



AMERICAN INDIAN OR ALASKA NATIVE



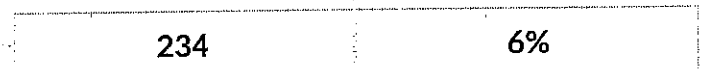
BLACK OR AFRICAN AMERICAN



HISPANIC OR LATINO



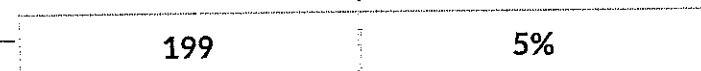
ASIAN OR NATIVE HAWAIIAN/OTHER PACIFIC ISLANDER



WHITE



MULTIRACIAL



OTHER GROUPS

ENGLISH LANGUAGE LEARNERS

35	1%
----	----

STUDENTS WITH DISABILITIES

625	16%
-----	-----

ECONOMICALLY DISADVANTAGED

1,007	25%
-------	-----

MIGRANT

—	—
---	---

HOMELESS

37	1%
----	----

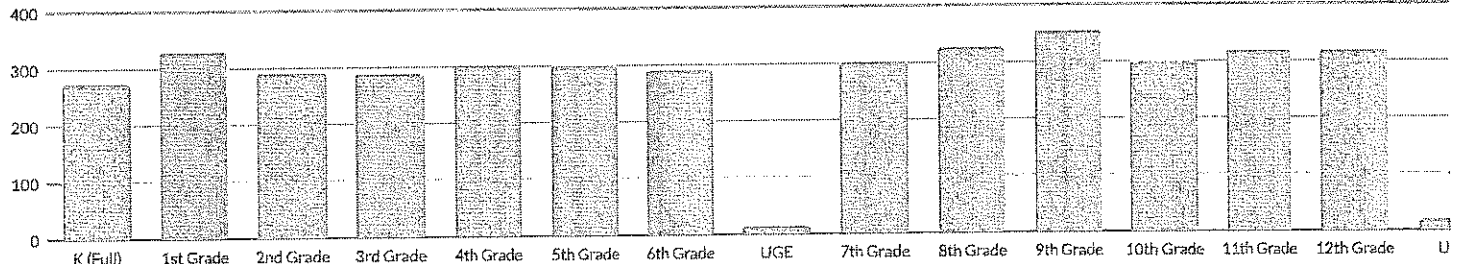
FOSTER CARE

—	—
---	---

PARENT IN ARMED FORCES

22	1%
----	----

ENROLLMENT BY GRADE



K (FULL DAY)

274	7%
-----	----

1ST GRADE

329	8%
-----	----

2ND GRADE

291	7%
-----	----

3RD GRADE

288	7%
-----	----

4TH GRADE

302	8%
-----	----

5TH GRADE

300	7%
-----	----

6TH GRADE

290	7%
-----	----

UNGRADED ELEMENTARY

14	0%
----	----

7TH GRADE

301	7%
-----	----

8TH GRADE

326	8%
-----	----

9TH GRADE

354	9%
-----	----

10TH GRADE

299	7%
-----	----

11TH GRADE

318	8%
-----	----

12TH GRADE

318	8%
-----	----

UNGRADED SECONDARY

19	0%
----	----

EAST GREENBUSH CSD GRADES 3-8 ELA ASSESSMENT DATA

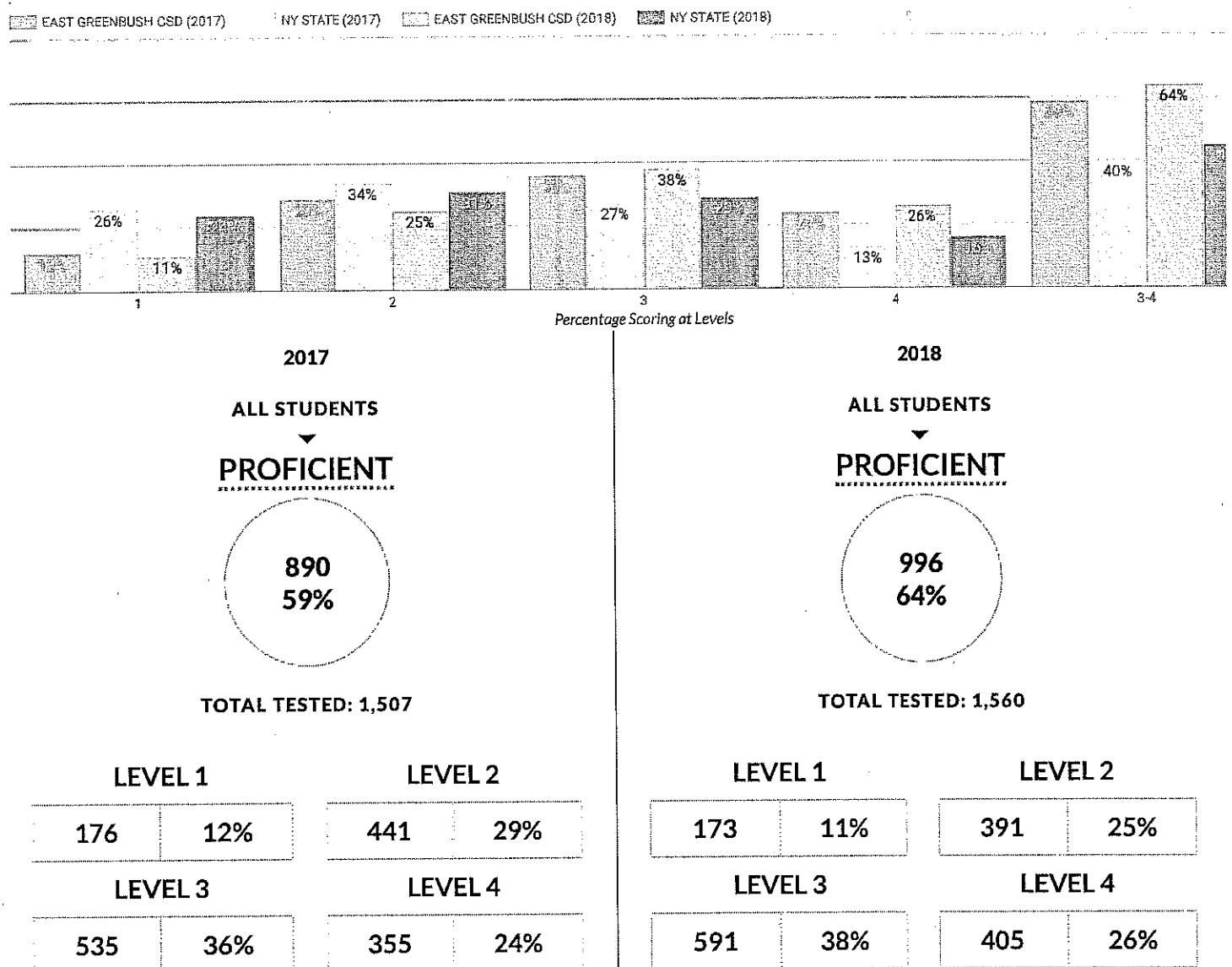
The grades 3-8 English Language Arts (ELA) and mathematics assessments measure the higher learning standards that were adopted by the State Board of Regents in 2010, which more accurately reflect students' progress toward college and career readiness. Data are available statewide and at the county, district, and school level.

Data available on this site are based on those reported by schools and districts to the State as of August 22, 2018 via the Student Information Repository System (SIRS). The New York State School Report Card 3-8 English Language Arts (ELA) and mathematics assessment data will be based on those data reported as of the final school year reporting deadline.

For more information and additional files, please view the NYSED press release

Due to the State's new two-session test design and performance standards, the 2018 Grades 3-8 ELA and math results cannot be compared with prior-year results. The new baseline established this year will enable comparisons with student scores in 2019 and 2020

Assessment Data - Glossary of Terms | Assessment Data - Business Rules



19%

BY ETHNICITY

MULTIRACIAL
▼
PROFICIENT
XXXXXXXXXXXXXXXXXXXX

TOTAL TESTED: 73

LEVEL 1		LEVEL 2	
9	12%	24	33%
LEVEL 3		LEVEL 4	
18	25%	22	30%

AMERICAN INDIAN OR ALASKA NATIVE
▼

PROFICIENT
XXXXXXXXXXXXXXXXXXXX

TOTAL TESTED: —

LEVEL 1		LEVEL 2	
—	—	—	—
LEVEL 3		LEVEL 4	
—	—	—	—

MULTIRACIAL
▼
PROFICIENT
XXXXXXXXXXXXXXXXXXXX

TOTAL TESTED: 62

LEVEL 1		LEVEL 2	
9	15%	6	10%
LEVEL 3		LEVEL 4	
26	42%	21	34%

AMERICAN INDIAN OR ALASKA NATIVE
▼

PROFICIENT
XXXXXXXXXXXXXXXXXXXX

TOTAL TESTED: —

LEVEL 1		LEVEL 2	
—	—	—	—
LEVEL 3		LEVEL 4	
—	—	—	—

ASIAN OR NATIVE HAWAIIAN/OTHER PACIFIC ISLANDER

PROFICIENT

TOTAL TESTED: 99

LEVEL 1		LEVEL 2	
8	8%	23	23%
LEVEL 3		LEVEL 4	
35	35%	33	33%

WHITE

PROFICIENT

TOTAL TESTED: 1,203

LEVEL 1		LEVEL 2	
126	10%	353	29%
LEVEL 3		LEVEL 4	
446	37%	278	23%

ASIAN OR NATIVE HAWAIIAN/OTHER PACIFIC ISLANDER

PROFICIENT

TOTAL TESTED: 102

LEVEL 1		LEVEL 2	
7	7%	23	23%
LEVEL 3		LEVEL 4	
32	31%	40	39%

WHITE

PROFICIENT

TOTAL TESTED: 1,257

LEVEL 1		LEVEL 2	
132	11%	315	25%
LEVEL 3		LEVEL 4	
485	39%	325	26%

BLACK OR AFRICAN AMERICAN

PROFICIENT

TOTAL TESTED: —

LEVEL 1

—	—
---	---

LEVEL 2

—	—
---	---

LEVEL 3

—	—
---	---

LEVEL 4

—	—
---	---

HISPANIC OR LATINO

PROFICIENT

TOTAL TESTED: 84

LEVEL 1

18	21%
----	-----

LEVEL 2

24	29%
----	-----

LEVEL 3

23	27%
----	-----

LEVEL 4

19	23%
----	-----

BLACK OR AFRICAN AMERICAN

PROFICIENT

TOTAL TESTED: —

LEVEL 1

—	—
---	---

LEVEL 2

—	—
---	---

LEVEL 3

—	—
---	---

LEVEL 4

—	—
---	---

HISPANIC OR LATINO

PROFICIENT

TOTAL TESTED: 100

LEVEL 1

13	13%
----	-----

LEVEL 2

37	37%
----	-----

LEVEL 3

35	35%
----	-----

LEVEL 4

15	15%
----	-----

OTHER GROUPS

GENERAL-EDUCATION STUDENTS

PROFICIENT

TOTAL TESTED: 1,309

LEVEL 1

75	6%
----	----

LEVEL 2

367	28%
-----	-----

LEVEL 3

515	39%
-----	-----

LEVEL 4

352	27%
-----	-----

STUDENTS WITH DISABILITIES

PROFICIENT

TOTAL TESTED: 198

LEVEL 1

101	51%
-----	-----

LEVEL 2

74	37%
----	-----

LEVEL 3

20	10%
----	-----

LEVEL 4

3	2%
---	----

GENERAL-EDUCATION STUDENTS

PROFICIENT

TOTAL TESTED: 1,362

LEVEL 1

86	6%
----	----

LEVEL 2

318	23%
-----	-----

LEVEL 3

558	41%
-----	-----

LEVEL 4

400	29%
-----	-----

STUDENTS WITH DISABILITIES

PROFICIENT

TOTAL TESTED: 198

LEVEL 1

87	44%
----	-----

LEVEL 2

73	37%
----	-----

LEVEL 3

33	17%
----	-----

LEVEL 4

5	3%
---	----

NON-ENGLISH LANGUAGE LEARNERS

PROFICIENT

TOTAL TESTED: 1,495

LEVEL 1

168	11%
-----	-----

LEVEL 2

437	29%
-----	-----

LEVEL 3

535	36%
-----	-----

LEVEL 4

355	24%
-----	-----

ENGLISH LANGUAGE LEARNERS

PROFICIENT

TOTAL TESTED: 12

LEVEL 1

8	67%
---	-----

LEVEL 2

4	33%
---	-----

LEVEL 3

0	0%
---	----

LEVEL 4

0	0%
---	----

NON-ENGLISH LANGUAGE LEARNERS

PROFICIENT

TOTAL TESTED: 1,543

LEVEL 1

164	11%
-----	-----

LEVEL 2

386	25%
-----	-----

LEVEL 3

588	38%
-----	-----

LEVEL 4

405	26%
-----	-----

ENGLISH LANGUAGE LEARNERS

PROFICIENT

TOTAL TESTED: 17

LEVEL 1

9	53%
---	-----

LEVEL 2

5	29%
---	-----

LEVEL 3

3	18%
---	-----

LEVEL 4

0	0%
---	----

NOT ECONOMICALLY DISADVANTAGED

▼
PROFICIENT
.....

TOTAL TESTED: 1,152

LEVEL 1

88	8%
----	----

LEVEL 2

307	27%
-----	-----

LEVEL 3

443	38%
-----	-----

LEVEL 4

314	27%
-----	-----

ECONOMICALLY DISADVANTAGED

▼
PROFICIENT
.....

TOTAL TESTED: 355

LEVEL 1

88	25%
----	-----

LEVEL 2

134	38%
-----	-----

LEVEL 3

92	26%
----	-----

LEVEL 4

41	12%
----	-----

NOT ECONOMICALLY DISADVANTAGED

▼
PROFICIENT
.....

TOTAL TESTED: 1,179

LEVEL 1

84	7%
----	----

LEVEL 2

262	22%
-----	-----

LEVEL 3

472	40%
-----	-----

LEVEL 4

361	31%
-----	-----

ECONOMICALLY DISADVANTAGED

▼
PROFICIENT
.....

TOTAL TESTED: 381

LEVEL 1

89	23%
----	-----

LEVEL 2

129	34%
-----	-----

LEVEL 3

119	31%
-----	-----

LEVEL 4

44	12%
----	-----

NOT MIGRANT



PROFICIENT

TOTAL TESTED: —

LEVEL 1

—	—
---	---

LEVEL 2

—	—
---	---

LEVEL 3

—	—
---	---

LEVEL 4

—	—
---	---

MIGRANT



PROFICIENT

TOTAL TESTED: —

LEVEL 1

—	—
---	---

LEVEL 2

—	—
---	---

LEVEL 3

—	—
---	---

LEVEL 4

—	—
---	---

NOT MIGRANT



PROFICIENT

TOTAL TESTED: —

LEVEL 1

—	—
---	---

LEVEL 2

—	—
---	---

LEVEL 3

—	—
---	---

LEVEL 4

—	—
---	---

MIGRANT



PROFICIENT

TOTAL TESTED: —

LEVEL 1

—	—
---	---

LEVEL 2

—	—
---	---

LEVEL 3

—	—
---	---

LEVEL 4

—	—
---	---

EAST GREENBUSH CSD GRADES 3-8 MATHEMATICS ASSESSMENT DATA

The grades 3-8 English Language Arts (ELA) and mathematics assessments measure the higher learning standards that were adopted by the State Board of Regents in 2010, which more accurately reflect students' progress toward college and career readiness. Data are available statewide and at the county, district, and school level.

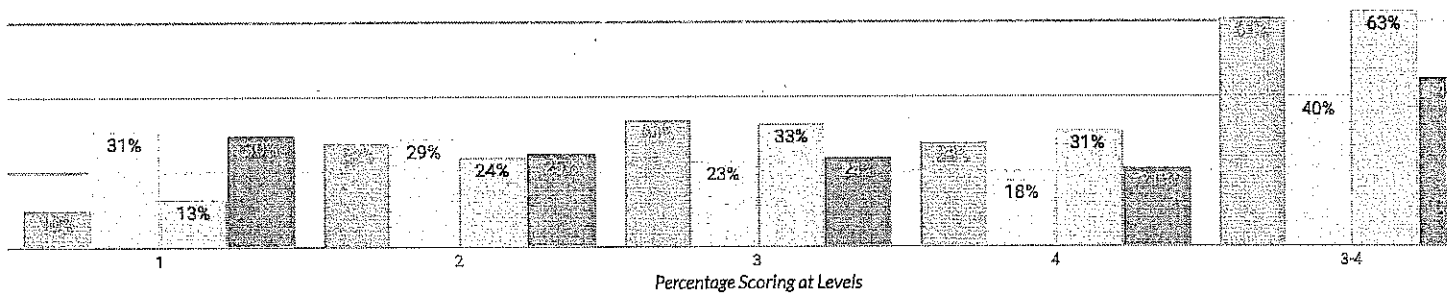
Data available on this site are based on those reported by schools and districts to the State as of August 22, 2018 via the Student Information Repository System (SIRS). The New York State School Report Card 3-8 English Language Arts (ELA) and mathematics assessment data will be based on those data reported as of the final school year reporting deadline.

For more information and additional files, please view the NYSED press release

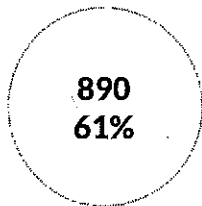
Due to the State's new two-session test design and performance standards, the 2018 Grades 3-8 ELA and math results cannot be compared with prior-year results. The new baseline established this year will enable comparisons with student scores in 2019 and 2020

Assessment Data - Glossary of Terms | Assessment Data - Business Rules

EAST GREENBUSH CSD (2017)
 NY STATE (2017)
 EAST GREENBUSH CSD (2018)
 NY STATE (2018)



2017
 ALL STUDENTS
 ▼
PROFICIENT



TOTAL TESTED: 1,451

LEVEL 1

149 10%

LEVEL 2

412 28%

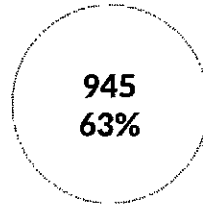
LEVEL 3

488 34%

LEVEL 4

402 28%

2018
 ALL STUDENTS
 ▼
PROFICIENT



TOTAL TESTED: 1,492

LEVEL 1

191 13%

LEVEL 2

356 24%

LEVEL 3

489 33%

LEVEL 4

456 31%

30%

BY ETHNICITY

MULTIRACIAL
▼
PROFICIENT

TOTAL TESTED: 71

LEVEL 1		LEVEL 2	
10	14%	23	32%
LEVEL 3		LEVEL 4	
22	31%	16	23%

AMERICAN INDIAN OR ALASKA NATIVE
▼
PROFICIENT

TOTAL TESTED: —

LEVEL 1		LEVEL 2	
—	—	—	—
LEVEL 3		LEVEL 4	
—	—	—	—

MULTIRACIAL
▼
PROFICIENT

TOTAL TESTED: 61

LEVEL 1		LEVEL 2	
12	20%	14	23%
LEVEL 3		LEVEL 4	
18	30%	17	28%

AMERICAN INDIAN OR ALASKA NATIVE
▼
PROFICIENT

TOTAL TESTED: —

LEVEL 1		LEVEL 2	
—	—	—	—
LEVEL 3		LEVEL 4	
—	—	—	—

ASIAN OR NATIVE HAWAIIAN/OTHER PACIFIC ISLANDER

▼
PROFICIENT

TOTAL TESTED: 89

LEVEL 1		LEVEL 2	
1	1%	18	20%
LEVEL 3		LEVEL 4	
28	31%	42	47%

WHITE

▼
PROFICIENT

TOTAL TESTED: 1,166

LEVEL 1		LEVEL 2	
113	10%	321	28%
LEVEL 3		LEVEL 4	
408	35%	324	28%

ASIAN OR NATIVE HAWAIIAN/OTHER PACIFIC ISLANDER

▼
PROFICIENT

TOTAL TESTED: 101

LEVEL 1		LEVEL 2	
6	6%	18	18%
LEVEL 3		LEVEL 4	
31	31%	46	46%

WHITE

▼
PROFICIENT

TOTAL TESTED: 1,194

LEVEL 1		LEVEL 2	
141	12%	281	24%
LEVEL 3		LEVEL 4	
408	34%	364	30%

PROFICIENT

Figure 1 is a schematic diagram of the experimental setup. It shows a central vertical tube with a magnetic field (B) applied along its axis. The tube is surrounded by a fluid medium. The diagram is labeled with 'B' and 'Z'.

PROFICIENT

Group	Percentage
All respondents	18%
Those who believe that the current system is the best way to run the country	23%

PROFICIENT

Initiator Concentration (mol/L)	Polymerization Rate (1/h) - DCE	Polymerization Rate (1/h) - DCE + BPO
0.00	0.0	0.1
0.01	0.0	0.1
0.02	0.8	0.1
0.03	0.8	0.1
0.04	0.8	0.1

PROFICIENT

27 28%

OTHER GROUPS

GENERAL-EDUCATION STUDENTS

PROFICIENT

TOTAL TESTED: 1,257

LEVEL 1

57	5%
----	----

LEVEL 2

347	28%
-----	-----

LEVEL 3

463	37%
-----	-----

LEVEL 4

390	31%
-----	-----

STUDENTS WITH DISABILITIES

PROFICIENT

TOTAL TESTED: 194

LEVEL 1

92	47%
----	-----

LEVEL 2

65	34%
----	-----

LEVEL 3

25	13%
----	-----

LEVEL 4

12	6%
----	----

GENERAL-EDUCATION STUDENTS

PROFICIENT

TOTAL TESTED: 1,290

LEVEL 1

82	6%
----	----

LEVEL 2

302	23%
-----	-----

LEVEL 3

463	36%
-----	-----

LEVEL 4

443	34%
-----	-----

STUDENTS WITH DISABILITIES

PROFICIENT

TOTAL TESTED: 202

LEVEL 1

109	54%
-----	-----

LEVEL 2

54	27%
----	-----

LEVEL 3

26	13%
----	-----

LEVEL 4

13	6%
----	----

NON-ENGLISH LANGUAGE LEARNERS

PROFICIENT

TOTAL TESTED: 1,438

LEVEL 1

142	10%
-----	-----

LEVEL 2

408	28%
-----	-----

LEVEL 3

487	34%
-----	-----

LEVEL 4

401	28%
-----	-----

ENGLISH LANGUAGE LEARNERS

PROFICIENT

TOTAL TESTED: 13

LEVEL 1

7	54%
---	-----

LEVEL 2

4	31%
---	-----

LEVEL 3

1	8%
---	----

LEVEL 4

1	8%
---	----

NON-ENGLISH LANGUAGE LEARNERS

PROFICIENT

TOTAL TESTED: 1,473

LEVEL 1

185	13%
-----	-----

LEVEL 2

349	24%
-----	-----

LEVEL 3

485	33%
-----	-----

LEVEL 4

454	31%
-----	-----

ENGLISH LANGUAGE LEARNERS

PROFICIENT

TOTAL TESTED: 19

LEVEL 1

6	32%
---	-----

LEVEL 2

7	37%
---	-----

LEVEL 3

4	21%
---	-----

LEVEL 4

2	11%
---	-----

NOT ECONOMICALLY DISADVANTAGED

▼
PROFICIENT
.....

TOTAL TESTED: 1,116

LEVEL 1

70	6%
----	----

LEVEL 2

288	26%
-----	-----

LEVEL 3

402	36%
-----	-----

LEVEL 4

356	32%
-----	-----

ECONOMICALLY DISADVANTAGED

▼
PROFICIENT
.....

TOTAL TESTED: 335

LEVEL 1

79	24%
----	-----

LEVEL 2

124	37%
-----	-----

LEVEL 3

86	26%
----	-----

LEVEL 4

46	14%
----	-----

NOT ECONOMICALLY DISADVANTAGED

▼
PROFICIENT
.....

TOTAL TESTED: 1,127

LEVEL 1

82	7%
----	----

LEVEL 2

243	22%
-----	-----

LEVEL 3

399	35%
-----	-----

LEVEL 4

403	36%
-----	-----

ECONOMICALLY DISADVANTAGED

▼
PROFICIENT
.....

TOTAL TESTED: 365

LEVEL 1

109	30%
-----	-----

LEVEL 2

113	31%
-----	-----

LEVEL 3

90	25%
----	-----

LEVEL 4

53	15%
----	-----

NOT MIGRANT
▼
PROFICIENT
XXXXXXXXXXXXXXXXXXXX

TOTAL TESTED: —

LEVEL 1

—	—
---	---

LEVEL 2

—	—
---	---

LEVEL 3

—	—
---	---

LEVEL 4

—	—
---	---

MIGRANT
▼
PROFICIENT
XXXXXXXXXXXXXXXXXXXX

TOTAL TESTED: —

LEVEL 1

—	—
---	---

LEVEL 2

—	—
---	---

LEVEL 3

—	—
---	---

LEVEL 4

—	—
---	---

NOT MIGRANT
▼
PROFICIENT
XXXXXXXXXXXXXXXXXXXX

TOTAL TESTED: —

LEVEL 1

—	—
---	---

LEVEL 2

—	—
---	---

LEVEL 3

—	—
---	---

LEVEL 4

—	—
---	---

MIGRANT
▼
PROFICIENT
XXXXXXXXXXXXXXXXXXXX

TOTAL TESTED: —

LEVEL 1

—	—
---	---

LEVEL 2

—	—
---	---

LEVEL 3

—	—
---	---

LEVEL 4

—	—
---	---

EAST GREENBUSH CSD GRADES 3-8 MATHEMATICS ASSESSMENT DATA

The grades 3-8 English Language Arts (ELA) and mathematics assessments measure the higher learning standards that were adopted by the State Board of Regents in 2010, which more accurately reflect students' progress toward college and career readiness. Data are available statewide and at the county, district, and school level.

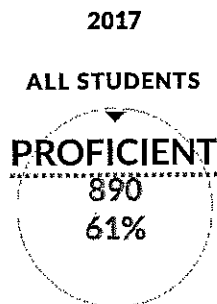
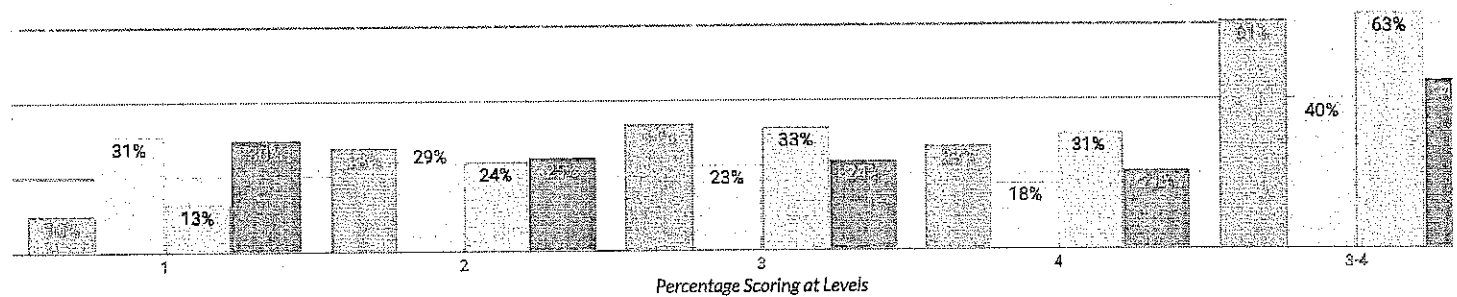
Data available on this site are based on those reported by schools and districts to the State as of August 22, 2018 via the Student Information Repository System (SIRS). The New York State School Report Card 3-8 English Language Arts (ELA) and mathematics assessment data will be based on those data reported as of the final school year reporting deadline.

For more information and additional files, please view the NYSED press release

Due to the State's new two-session test design and performance standards, the 2018 Grades 3-8 ELA and math results cannot be compared with prior-year results. The new baseline established this year will enable comparisons with student scores in 2019 and 2020

Assessment Data - Glossary of Terms | Assessment Data - Business Rules

EAST GREENBUSH CSD (2017)
 NY STATE (2017)
 EAST GREENBUSH CSD (2018)
 NY STATE (2018)



TOTAL TESTED: 1,451

LEVEL 1

149 10%

LEVEL 2

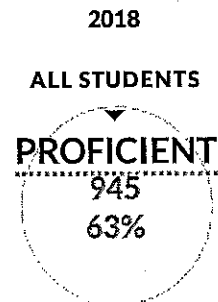
412 28%

LEVEL 3

488 34%

LEVEL 4

402 28%



TOTAL TESTED: 1,492

LEVEL 1

191 13%

LEVEL 2

356 24%

LEVEL 3

489 33%

LEVEL 4

456 31%

BY GENDER

FEMALE
▼
PROFICIENT
██

TOTAL TESTED: 729

LEVEL 1		LEVEL 2	
69	9%	199	27%
LEVEL 3		LEVEL 4	
249	34%	212	29%

MALE
▼
PROFICIENT
██

TOTAL TESTED: 722

LEVEL 1		LEVEL 2	
80	11%	213	30%
LEVEL 3		LEVEL 4	
239	33%	190	26%

FEMALE
▼
PROFICIENT
██

TOTAL TESTED: 735

LEVEL 1		LEVEL 2	
92	13%	160	22%
LEVEL 3		LEVEL 4	
254	35%	229	31%

MALE
▼
PROFICIENT
██

TOTAL TESTED: 757

LEVEL 1		LEVEL 2	
99	13%	196	26%
LEVEL 3		LEVEL 4	
235	31%	227	30%

BY ETHNICITY

MULTIRACIAL
▼
PROFICIENT

TOTAL TESTED: 71

LEVEL 1

10	14%
----	-----

LEVEL 2

23	32%
----	-----

LEVEL 3

22	31%
----	-----

LEVEL 4

16	23%
----	-----

AMERICAN INDIAN OR ALASKA NATIVE

▼
PROFICIENT

TOTAL TESTED: —

LEVEL 1

—	—
---	---

LEVEL 2

—	—
---	---

LEVEL 3

—	—
---	---

LEVEL 4

—	—
---	---

MULTIRACIAL
▼
PROFICIENT

TOTAL TESTED: 61

LEVEL 1

12	20%
----	-----

LEVEL 2

14	23%
----	-----

LEVEL 3

18	30%
----	-----

LEVEL 4

17	28%
----	-----

AMERICAN INDIAN OR ALASKA NATIVE

▼
PROFICIENT

TOTAL TESTED: —

LEVEL 1

—	—
---	---

LEVEL 2

—	—
---	---

LEVEL 3

—	—
---	---

LEVEL 4

—	—
---	---

ASIAN OR NATIVE HAWAIIAN/OTHER PACIFIC ISLANDER

PROFICIENT

TOTAL TESTED: 89

LEVEL 1		LEVEL 2	
1	1%	18	20%
LEVEL 3		LEVEL 4	
28	31%	42	47%

WHITE

PROFICIENT

TOTAL TESTED: 1,166

LEVEL 1		LEVEL 2	
113	10%	321	28%
LEVEL 3		LEVEL 4	
408	35%	324	28%

ASIAN OR NATIVE HAWAIIAN/OTHER PACIFIC ISLANDER

PROFICIENT

TOTAL TESTED: 101

LEVEL 1		LEVEL 2	
6	6%	18	18%
LEVEL 3		LEVEL 4	
31	31%	46	46%

WHITE

PROFICIENT

TOTAL TESTED: 1,194

LEVEL 1		LEVEL 2	
141	12%	281	24%
LEVEL 3		LEVEL 4	
408	34%	364	30%

BLACK OR AFRICAN AMERICAN

PROFICIENT

TOTAL TESTED: —

LEVEL 1

—	—
---	---

LEVEL 2

—	—
---	---

LEVEL 3

—	—
---	---

LEVEL 4

—	—
---	---

HISPANIC OR LATINO

PROFICIENT

TOTAL TESTED: 78

LEVEL 1

11	14%
----	-----

LEVEL 2

25	32%
----	-----

LEVEL 3

24	31%
----	-----

LEVEL 4

18	23%
----	-----

BLACK OR AFRICAN AMERICAN

PROFICIENT

TOTAL TESTED: —

LEVEL 1

—	—
---	---

LEVEL 2

—	—
---	---

LEVEL 3

—	—
---	---

LEVEL 4

—	—
---	---

HISPANIC OR LATINO

PROFICIENT

TOTAL TESTED: 97

LEVEL 1

21	22%
----	-----

LEVEL 2

27	28%
----	-----

LEVEL 3

22	23%
----	-----

LEVEL 4

27	28%
----	-----

OTHER GROUPS

GENERAL-EDUCATION STUDENTS

PROFICIENT

TOTAL TESTED: 1,257

LEVEL 1

57	5%
----	----

LEVEL 2

347	28%
-----	-----

LEVEL 3

463	37%
-----	-----

LEVEL 4

390	31%
-----	-----

STUDENTS WITH DISABILITIES

PROFICIENT

TOTAL TESTED: 194

LEVEL 1

92	47%
----	-----

LEVEL 2

65	34%
----	-----

LEVEL 3

25	13%
----	-----

LEVEL 4

12	6%
----	----

GENERAL-EDUCATION STUDENTS

PROFICIENT

TOTAL TESTED: 1,290

LEVEL 1

82	6%
----	----

LEVEL 2

302	23%
-----	-----

LEVEL 3

463	36%
-----	-----

LEVEL 4

443	34%
-----	-----

STUDENTS WITH DISABILITIES

PROFICIENT

TOTAL TESTED: 202

LEVEL 1

109	54%
-----	-----

LEVEL 2

54	27%
----	-----

LEVEL 3

26	13%
----	-----

LEVEL 4

13	6%
----	----

NON-ENGLISH LANGUAGE LEARNERS

PROFICIENT

TOTAL TESTED: 1,438

LEVEL 1

142	10%
-----	-----

LEVEL 2

408	28%
-----	-----

LEVEL 3

487	34%
-----	-----

LEVEL 4

401	28%
-----	-----

ENGLISH LANGUAGE LEARNERS

PROFICIENT

TOTAL TESTED: 13

LEVEL 1

7	54%
---	-----

LEVEL 2

4	31%
---	-----

LEVEL 3

1	8%
---	----

LEVEL 4

1	8%
---	----

NON-ENGLISH LANGUAGE LEARNERS

PROFICIENT

TOTAL TESTED: 1,473

LEVEL 1

185	13%
-----	-----

LEVEL 2

349	24%
-----	-----

LEVEL 3

485	33%
-----	-----

LEVEL 4

454	31%
-----	-----

ENGLISH LANGUAGE LEARNERS

PROFICIENT

TOTAL TESTED: 19

LEVEL 1

6	32%
---	-----

LEVEL 2

7	37%
---	-----

LEVEL 3

4	21%
---	-----

LEVEL 4

2	11%
---	-----

NOT ECONOMICALLY DISADVANTAGED

PROFICIENT

TOTAL TESTED: 1,116

LEVEL 1

70	6%
----	----

LEVEL 2

288	26%
-----	-----

LEVEL 3

402	36%
-----	-----

LEVEL 4

356	32%
-----	-----

ECONOMICALLY DISADVANTAGED

PROFICIENT

TOTAL TESTED: 335

LEVEL 1

79	24%
----	-----

LEVEL 2

124	37%
-----	-----

LEVEL 3

86	26%
----	-----

LEVEL 4

46	14%
----	-----

NOT ECONOMICALLY DISADVANTAGED

PROFICIENT

TOTAL TESTED: 1,127

LEVEL 1

82	7%
----	----

LEVEL 2

243	22%
-----	-----

LEVEL 3

399	35%
-----	-----

LEVEL 4

403	36%
-----	-----

ECONOMICALLY DISADVANTAGED

PROFICIENT

TOTAL TESTED: 365

LEVEL 1

109	30%
-----	-----

LEVEL 2

113	31%
-----	-----

LEVEL 3

90	25%
----	-----

LEVEL 4

53	15%
----	-----

NOT MIGRANT

PROFICIENT

TOTAL TESTED: —

LEVEL 1

—	—
---	---

LEVEL 2

—	—
---	---

LEVEL 3

—	—
---	---

LEVEL 4

—	—
---	---

MIGRANT

PROFICIENT

TOTAL TESTED: —

LEVEL 1

—	—
---	---

LEVEL 2

—	—
---	---

LEVEL 3

—	—
---	---

LEVEL 4

—	—
---	---

NOT MIGRANT

PROFICIENT

TOTAL TESTED: —

LEVEL 1

—	—
---	---

LEVEL 2

—	—
---	---

LEVEL 3

—	—
---	---

LEVEL 4

—	—
---	---

MIGRANT

PROFICIENT

TOTAL TESTED: —

LEVEL 1

—	—
---	---

LEVEL 2

—	—
---	---

LEVEL 3

—	—
---	---

LEVEL 4

—	—
---	---

EAST GREENBUSH CSD - NEW YORK STATE REPORT CARD [2017 - 18]

The New York State Report Card is an important part of the Board of Regents' effort to raise learning standards for all students. It provides information to the public on school/district staff, students, and measures of school and district performance as required by the Every Student Succeeds Act (ESSA). Knowledge gained from the report card on a school's or district's strengths and weaknesses can be used to improve instruction and services to students.

2018-19 ACCOUNTABILITY STATUS BASED ON 2017-18 DATA

GOOD STANDING

EM INDICATOR LEVELS

Subgroup	Composite Performance	Growth	Composite Performance & Growth Combined	English Language Proficiency (ELP)	Progress	Chronic Absenteeism
All Students	4	3	4	3	4	4
American Indian or Alaska Native	—	—	—	—	—	—
Asian or Native Hawaiian/Other Pacific Islander	4	4	4	3	4	4
Black or African American	2	3	3	—	2	4
Hispanic or Latino	4	3	3	—	4	4
Multiracial	4	2	3	—	4	4
White	4	3	4	—	4	4
English Language Learners	3	4	4	3	—	4
Students with Disabilities	4	2	3	—	2	4
Economically Disadvantaged	4	2	3	—	3	4

EM COMPOSITE PERFORMANCE

Subgroup	Level
All Students	4
American Indian or Alaska Native	—
Asian or Native Hawaiian/Other Pacific Islander	4
Black or African American	2
Hispanic or Latino	4
Multiracial	4
White	4
English Language Learners	3
Students with Disabilities	4
Economically Disadvantaged	4

EM CORE SUBJECT PERFORMANCE

Subgroup	Subject	Cohort	Index	Level
All Students	ELA	1,551	167.2	4
	Math	1,528	169.5	4
	Science	530	223.4	4
	Combined	3,609	176.4	4
American Indian or Alaska Native	ELA	4	—	—
	Math	4	—	—
	Science	1	—	—
	Combined	9	—	—
Asian or Native Hawaiian/Other Pacific Islander	ELA	96	183.9	4
	Math	97	194.8	4
	Science	33	221.2	4
	Combined	226	194	4
Black or African American	ELA	37	113.5	2
	Math	37	101.4	2
	Science	33	184.8	2
	Combined	107	131.3	2
Hispanic or Latino	ELA	97	149	3
	Math	97	149.5	3
	Science	54	221.3	3
	Combined	248	164.9	3
Multiracial	ELA	61	177.9	4
	Math	60	152.5	4
	Science	51	223.5	4
	Combined	172	182.6	4
White	ELA	1,258	168.3	4
	Math	1,235	171.9	4
	Science	435	224.6	4
	Combined	2,928	178.2	4
English Language Learners	ELA	28	50	3
	Math	29	91.4	3
	Science	8	212.5	3
	Combined	65	88.5	3
Students with Disabilities	ELA	236	93	4
	Math	239	84.7	4
	Science	81	179	4
	Combined	556	102	4
Economically Disadvantaged	ELA	378	129	4

Subgroup	Subject	Cohort	Index	Level
	Math	367	121.3	4
	Science	133	205.3	4
	Combined	878	137.3	4

EM WEIGHTED AVERAGE PERFORMANCE

Subgroup	Subject	Cohort	Index	Level
All Students	ELA	1,725	150.3	4
	Math	1,720	150.6	4
	Science	598	198	4
	Combined	1,720	157.5	4
American Indian or Alaska Native	ELA	6	133.3	—
	Math	6	150	—
	Science	1	—	—
	Combined	6	—	—
Asian or Native Hawaiian/Other Pacific Islander	ELA	99	178.3	4
	Math	100	189	4
	Science	36	202.8	4
	Combined	100	186.6	4
Black or African American	ELA	45	93.3	3
	Math	42	89.3	3
	Science	36	169.4	3
	Combined	42	114.2	3
Hispanic or Latino	ELA	105	137.6	4
	Math	105	138.1	4
	Science	61	195.9	4
	Combined	105	150.9	4
Multiracial	ELA	71	152.8	4
	Math	70	130.7	4
	Science	63	181	4
	Combined	70	153.9	4
White	ELA	1,402	151	4
	Math	1,399	151.8	4
	Science	490	199.4	4
	Combined	1,399	158.5	4
English Language Learners	ELA	29	48.3	3
	Math	30	88.3	3
	Science	9	188.9	3
	Combined	30	84.6	3
Students with Disabilities	ELA	303	72.4	4
	Math	301	67.3	4
	Science	103	140.8	4
	Combined	301	80.2	4
Economically Disadvantaged	ELA	440	110.8	4

Subgroup	Subject	Cohort	Index	Level
	Math	435	102.3	4
	Science	160	170.6	4
	Combined	435	116.5	4

EM GROWTH (2015-16, 2016-17, AND 2017-18)

Subgroup	Sum Of SGPs	Number Of SGPs	Index	Level
All Students	324,635	6,445	50.4	3
American Indian or Alaska Native	—	10	—	—
Asian or Native Hawaiian/Other Pacific Islander	21,754	391	55.6	4
Black or African American	9,768	191	51.1	3
Hispanic or Latino	17,474	348	50.2	3
Multiracial	13,628	290	47	2
White	261,504	5,215	50.1	3
English Language Learners	3,011	53	56.8	4
Students with Disabilities	37,673	806	46.7	2
Economically Disadvantaged	66,695	1,380	48.3	2

EM COMPOSITE PERFORMANCE AND GROWTH COMBINED

Subgroup	Level
All Students	4
Asian or Native Hawaiian/Other Pacific Islander	4
Black or African American	3
Hispanic or Latino	3
Multiracial	3
White	4
English Language Learners	4
Students with Disabilities	3
Economically Disadvantaged	3

EM ELP

Subgroup	Number Of ELLs	Benchmark	Progress Rate	Success Ratio	Level
All Students	30	48%	58%	1.2	3
American Indian or Alaska Native	0	—	—	—	—
Asian or Native Hawaiian/Other Pacific Islander	39	45%	53%	1.2	3
Black or African American	3	—	—	—	—
Hispanic or Latino	2	—	—	—	—
Multiracial	0	—	—	—	—
White	2	—	—	—	—
English Language Learners	30	48%	58%	1.2	3
Students with Disabilities	5	—	—	—	—
Economically Disadvantaged	13	—	—	—	—

EM PROGRESS

Subgroup	Subject	Baseline	Cohort	Index	District MIP	State MIP	Long-Term Goal	Exceed Long-Term Goal	End Goal	Level	Average Of Levels
All Students	ELA	132.8	1,725	150.3	135.5%	100.7%	117.3	158.7	200	4	4
	Math	137.3	1,720	150.6	139.8%	103.3%	119.4	159.7	200	4	4
American Indian or Alaska Native	ELA	—	6	—	—	—	—	—	—	—	—
	Math	—	6	—	—	—	—	—	—	—	—
Asian or Native Hawaiian/Other Pacific Islander	ELA	159.9	99	178.3	161.5%	155.1%	162.6	181.3	200	4	4
	Math	174.8	100	189	175.8%	173%	177.5	188.8	200	4	4
Black or African American	ELA	95.3	45	93.3	99.5%	93.9%	111.6	155.8	200	1	2
	Math	81.1	42	89.3	85.9%	83.1%	102.6	151.3	200	3	2
Hispanic or Latino	ELA	121.1	105	137.6	124.3%	90.8%	109	154.5	200	4	4
	Math	125.8	105	138.1	128.8%	87%	105.8	152.9	200	4	4
Multiracial	ELA	123.9	71	152.8	126.9%	97.6%	114.6	157.3	200	4	4
	Math	120.7	70	130.7	123.9%	99.3%	116.1	158.1	200	4	4
White	ELA	133.6	1,402	151	136.3%	98%	115	157.5	200	4	4
	Math	138.5	1,399	151.8	141%	106.3%	121.9	161	200	4	4
English Language Learners	ELA	—	29	—	—	—	—	—	—	—	—
	Math	—	30	—	—	—	—	—	—	—	—
Students with Disabilities	ELA	63	303	72.4	68.5%	54.4%	78.6	139.3	200	3	2
	Math	69.6	301	67.3	74.8%	54.4%	78.6	139.3	200	2	2
Economically Disadvantaged	ELA	95.2	440	110.8	99.4%	90.7%	108.9	154.5	200	4	3
	Math	93	435	102.3	97.3%	89.4%	107.8	153.9	200	3	3

EM CHRONIC ABSENTEEISM

Subgroup	Baseline	Expected Attendance Days	Students Chronically Absent	Chronic Absenteeism Rate	District MIP	State MIP	Long-Term Goal	Exceed Long-Term Goal	End Goal	Level
All Students	8.1	2,517	181	7.2%	8%	15%	13.3%	9.2%	5%	4
American Indian or Alaska Native	—	10	—	—	—	—	—	—	—	—
Asian or Native Hawaiian/Other Pacific Islander	7.5	176	8	4.5%	7.4%	8.3%	7.7%	6.4%	5%	4
Black or African American	7.4	68	5	7.4%	7.3%	20.8%	18.2%	11.6%	5%	4
Hispanic or Latino	7	152	12	7.9%	6.9%	20.4%	17.8%	11.4%	5%	4
Multiracial	13.8	118	11	9.3%	13.4%	17%	15%	10%	5%	4
White	7.9	1,998	144	7.2%	7.8%	10.7%	9.7%	7.4%	5%	4
English Language Learners	3.3	31	1	3.2%	3.3%	18.1%	15.9%	10.5%	5%	4
Students with Disabilities	18.1	369	47	12.7%	17.6%	22.2%	19.3%	12.2%	5%	4
Economically Disadvantaged	17.9	688	100	14.5%	17.4%	20.5%	17.9%	11.5%	5%	4

EM ELA PARTICIPATION RATE

Subgroup	Tested 95%	Enrollment	Participation Rate
All Students	X	3,763	82.9%
American Indian or Alaska Native	—	3	—
Asian or Native Hawaiian/Other Pacific Islander	X	227	91.6%
Black or African American	X	105	83.8%
Hispanic or Latino	X	216	85.2%
Multiracial	X	173	78%
White	X	3,036	82.4%
English Language Learners	—	19	—
Students with Disabilities	X	630	70.8%
Economically Disadvantaged	X	962	79.8%

EM MATHEMATICS PARTICIPATION RATE

Subgroup	Tested 95%	Enrollment	Participation Rate
All Students	X	3,759	82.2%
American Indian or Alaska Native	—	3	—
Asian or Native Hawaiian/Other Pacific Islander	X	228	90.8%
Black or African American	X	102	85.3%
Hispanic or Latino	X	216	83.3%
Multiracial	X	172	78.5%
White	X	3,035	81.6%
English Language Learners	—	19	—
Students with Disabilities	X	629	70.9%
Economically Disadvantaged	X	959	76.6%

RECENTLY ARRIVED ELLS TAKING NYSESLAT IN LIEU OF NYSTP ELA

Grade	Number Taking NYSESLAT
Grade 7	1
Grade 8	1

HS INDICATOR LEVELS

Subgroup	Composite Performance	Graduation Rate	Composite Performance & Graduation Rate	English Language Proficiency (ELP)	Progress	Chronic Absenteeism	College, Career, & Civic Readiness (CCCR)
All Students	4	4	4	—	3	4	4
American Indian or Alaska Native	—	—	—	—	—	—	—
Asian or Native Hawaiian/Other Pacific Islander	4	3	4	—	—	4	—
Black or African American	2	2	2	—	—	3	—
Hispanic or Latino	3	4	4	—	—	3	4
Multiracial	3	3	3	—	—	4	3
White	4	3	4	—	3	3	4
English Language Learners	—	—	—	—	—	—	—
Students with Disabilities	4	4	4	—	3	3	4
Economically Disadvantaged	4	2	3	—	2	2	2

HS COMPOSITE PERFORMANCE

Subgroup	Subject	Cohort	Index	Combined Index	Level
All Students	ELA	321	222	207	4
	Math	321	167.8	207	4
	Science	321	229.3	207	4
	Social Studies	321	234.6	207	4
Asian or Native Hawaiian/Other Pacific Islander	ELA	28	233.9	226.6	4
	Math	28	207.1	226.6	4
	Science	28	235.7	226.6	4
	Social Studies	28	244.6	226.6	4
Black or African American	ELA	19	186.8	170.7	2
	Math	19	115.8	170.7	2
	Science	19	202.6	170.7	2
	Social Studies	19	223.7	170.7	2
Hispanic or Latino	ELA	37	212.2	194.5	3
	Math	37	151.4	194.5	3
	Science	37	220.3	194.5	3
	Social Studies	37	218.9	194.5	3
Multiracial	ELA	28	223.2	199.8	3
	Math	28	153.6	199.8	3
	Science	28	219.6	199.8	3
	Social Studies	28	228.6	199.8	3
White	ELA	257	222.6	208.7	4
	Math	257	171.6	208.7	4
	Science	257	230.2	208.7	4
	Social Studies	257	235.4	208.7	4
Students with Disabilities	ELA	57	159.6	158.2	4
	Math	57	112.3	158.2	4
	Science	57	205.3	158.2	4
	Social Studies	57	197.4	158.2	4
Economically Disadvantaged	ELA	56	192.9	180.1	4
	Math	56	135.7	180.1	4
	Science	56	212.5	180.1	4
	Social Studies	56	209.8	180.1	4

HS GRADUATION RATE

Subgroup	Cohort	Baseline	Number In Cohort	Grad Rate	District MIP	State MIP	Long-Term Goal	Exceed Long-Term Goal	End Goal	Level By Cohort	Level By Subgroup
All Students	4-Year	90.6%	322	96%	90.8%	82.3%	84.4%	89.7%	95%	4	4
	5-Year	95%	310	91.6%	95%	84.5%	86.4%	91.2%	96%	4	4
	6-Year	93.9%	357	95%	94%	84.6%	86.7%	91.9%	97%	4	4
American Indian or Alaska Native	4-Year	—	0	—	—	—	—	—	—	—	—
	5-Year	—	1	—	—	—	—	—	—	—	—
	6-Year	—	0	—	—	—	—	—	—	—	—
Asian or Native Hawaiian/Other Pacific Islander	4-Year	81.3%	18	94.4%	81.8%	88%	89.2%	92.1%	95%	4	3
	5-Year	96%	16	87.5%	96%	89.9%	90.9%	93.5%	96%	1	3
	6-Year	100%	25	96%	97%	89.4%	90.7%	93.9%	97%	4	3
Black or African American	4-Year	—	—	—	—	—	—	—	—	—	3
	5-Year	90.9%	17	82.4%	91.1%	75.9%	79.3%	87.7%	96%	3	3
	6-Year	91.7%	23	87%	91.9%	76%	79.5%	88.3%	97%	3	3
Hispanic or Latino	4-Year	100%	24	95.8%	95%	72.2%	76%	85.5%	95%	4	4
	5-Year	96.6%	27	100%	96%	74.8%	78.3%	87.2%	96%	4	4
	6-Year	96.3%	29	96.6%	96.3%	75.2%	78.8%	87.9%	97%	4	4
Multiracial	4-Year	87.9%	35	88.6%	88.2%	83.2%	85.2%	90.1%	95%	4	4
	5-Year	92.3%	33	87.9%	92.4%	84.5%	86.4%	91.2%	96%	3	4
	6-Year	96.6%	26	92.3%	96.6%	82.7%	85.1%	91.1%	97%	4	4
White	4-Year	91.1%	274	96%	91.3%	90%	90.8%	92.9%	95%	4	4
	5-Year	95.4%	269	92.2%	95.4%	91.3%	92.1%	94.1%	96%	3	4
	6-Year	93.9%	304	95.4%	94%	91%	92%	94.5%	97%	4	4
English Language Learners	4-Year	—	0	—	—	—	—	—	—	—	—
	5-Year	—	4	—	—	—	—	—	—	—	—
	6-Year	—	3	—	—	—	—	—	—	—	—
Students with Disabilities	4-Year	74.5%	62	85.5%	75.3%	58.2%	64.4%	79.7%	95%	4	4
	5-Year	87.3%	47	74.5%	87.6%	61.6%	67.4%	81.7%	96%	3	4
	6-Year	74.2%	55	87.3%	75.1%	59.9%	66.1%	81.6%	97%	4	4
Economically Disadvantaged	4-Year	70.8%	64	93.8%	71.8%	76.1%	79.2%	87.1%	95%	4	3
	5-Year	81.7%	50	72%	82.3%	79.7%	82.4%	89.2%	96%	1	3
	6-Year	72.5%	60	81.7%	73.5%	80%	82.8%	89.9%	97%	3	3

HS COMPOSITE PERFORMANCE & GRADUATION RATE COMBINED

Subgroup	Level
All Students	4
Asian or Native Hawaiian/Other Pacific Islander	4
Black or African American	2
Hispanic or Latino	4
Multiracial	3
White	4
Students with Disabilities	4
Economically Disadvantaged	3

HS ELP

Subgroup	Number Of ELLs	Benchmark	Progress Rate	Success Ratio	Level
All Students	4	—	—	—	—
American Indian or Alaska Native	0	—	—	—	—
Asian or Native Hawaiian/Other Pacific Islander	3	—	—	—	—
Black or African American	0	—	—	—	—
Hispanic or Latino	1	—	—	—	—
Multiracial	0	—	—	—	—
White	0	—	—	—	—
English Language Learners	4	—	—	—	—
Students with Disabilities	0	—	—	—	—
Economically Disadvantaged	3	—	—	—	—

HS PROGRESS

Subgroup	Subject	Baseline	Cohort	Index	District MIP	State MIP	Long-Term Goal	Exceed Long-Term Goal	End Goal	Level	Average Of Levels
All Students	ELA	216.6	321	222	215%	189.4%	193.6	204.3	215	4	3
	Math	179.2	321	167.8	180%	149.1%	157.6	178.8	200	3	3
Asian or Native Hawaiian/Other Pacific Islander	ELA	--	28	--	--	--	--	--	--	--	--
	Math	--	28	--	--	--	--	--	--	--	--
Black or African American	ELA	--	19	--	--	--	--	--	--	--	--
	Math	--	19	--	--	--	--	--	--	--	--
Hispanic or Latino	ELA	--	37	--	--	--	--	--	--	--	--
	Math	--	37	--	--	--	--	--	--	--	--
Multiracial	ELA	--	28	--	--	--	--	--	--	--	--
	Math	--	28	--	--	--	--	--	--	--	--
White	ELA	217.5	257	222.6	215%	207.8%	209	212	215	4	3
	Math	180.9	257	171.6	181.7%	166.4%	172	186	200	2	3
Students with Disabilities	ELA	148.3	57	159.6	151%	116.3%	132.8	173.9	215	4	3
	Math	125.8	57	112.3	128.8%	86%	105	152.5	200	3	3
Economically Disadvantaged	ELA	204.8	56	192.9	205.2%	168.8%	176.5	195.8	215	3	2
	Math	157.9	56	135.7	159.6%	127.9%	139.9	170	200	2	2

HS CHRONIC ABSENTEEISM

Subgroup	Baseline	Expected Attendance Days	Students Chronically Absent	Chronic Absenteeism Rate	District MIP	State MIP	Long-Term Goal	Exceed Long-Term Goal	End Goal	Level
All Students	17.3	1,315	204	15.5%	16.8%	23.4%	20.4%	12.7%	5%	4
American Indian or Alaska Native	--	4	--	--	--	--	--	--	--	--
Asian or Native Hawaiian/Other Pacific Islander	11.1	58	6	10.3%	10.9%	14.4%	12.8%	8.9%	5%	4
Black or African American	22.6	33	9	27.3%	21.9%	32.7%	28.1%	16.6%	5%	3
Hispanic or Latino	13.9	77	16	20.8%	13.5%	32.8%	28.2%	16.6%	5%	3
Multiracial	17.9	70	10	14.3%	17.4%	23.9%	20.8%	12.9%	5%	4
White	17.6	1,075	162	15.1%	17.1%	16.1%	14.3%	9.7%	5%	3
English Language Learners	--	11	--	--	--	--	--	--	--	--
Students with Disabilities	26.3	228	66	28.9%	25.4%	34%	29.2%	17.1%	5%	3
Economically Disadvantaged	37.8	297	98	33%	36.5%	31.3%	26.9%	16%	5%	2

CCCR LEVELS

Subgroup	Baseline	Index	District MIP	State MIP	Long-Term Goal	Exceed Long-Term Goal	End Goal	Level
All Students	157.1	163.7	157.8	128.2	136	155.5	175	4
Asian or Native Hawaiian/Other Pacific Islander	—	—	—	—	—	—	—	—
Black or African American	—	—	—	—	—	—	—	—
Hispanic or Latino	137.5	161.8	139	101.4	113.6	144.3	175	4
Multiracial	122.9	133.3	125	127.9	135.7	155.4	175	3
White	158.4	166.2	159.1	148.6	153	164	175	4
Students with Disabilities	100	116.7	103	72.2	89.3	132.2	175	4
Economically Disadvantaged	131.3	114.5	133	110.2	121	148	175	2

CCCR COUNTS

Subgroup	Cohort Count	Annual Biliteracy	2.0 Weight	1.5 Weight	1.0 Weight	0.5 Weight
All Students	329	0	225	1	86	2
Asian or Native Hawaiian/Other Pacific Islander	27	0	—	—	—	—
Black or African American	19	0	—	—	—	—
Hispanic or Latino	38	0	25	0	11	1
Multiracial	30	0	14	0	12	0
White	263	0	184	1	67	1
Students with Disabilities	54	0	15	0	32	2
Economically Disadvantaged	62	0	22	0	26	2

HS ELA PARTICIPATION RATE

Subgroup	Tested 95%	12th Grade Enrollment	Participation Rate
All Students	✓	319	100%
American Indian or Alaska Native	—	0	—
Asian or Native Hawaiian/Other Pacific Islander	—	15	—
Black or African American	—	10	—
Hispanic or Latino	—	24	—
Multiracial	—	13	—
White	✓	257	100%
English Language Learners	—	0	—
Students with Disabilities	✓	50	100%
Economically Disadvantaged	✓	51	100%

HS MATHEMATICS PARTICIPATION RATE

Subgroup	Tested 95%	12th Grade Enrollment	Participation Rate
All Students	✓	319	100%
American Indian or Alaska Native	—	0	—
Asian or Native Hawaiian/Other Pacific Islander	—	15	—
Black or African American	—	10	—
Hispanic or Latino	—	24	—
Multiracial	—	13	—
White	✓	257	100%
English Language Learners	—	0	—
Students with Disabilities	✓	50	100%
Economically Disadvantaged	✓	51	100%

STAFF QUALIFICATIONS (2017-18)

	INEXPERIENCED TEACHERS		INEXPERIENCED PRINCIPALS		TEACHERS TEACHING OUT OF THEIR SUBJECT/FIELD OF CERTIFICATION	
	#	%	#	%	#	%
THIS DISTRICT	31	9%	3	38%	2	1%
STATEWIDE	31,189	16%	1,840	37%	17,189	8%
STATEWIDE HIGH-POVERTY SCHOOLS	11,145	26%	480	43%	8,126	18%
STATEWIDE LOW-POVERTY SCHOOLS	5,839	9%	281	23%	729	1%

2017-18 Grades 3-8 ELA and Math results cannot be compared to those from previous years, as these tests were redesigned in 2017-18.

GRADES 3-8 ENGLISH LANGUAGE ARTS SUMMARY RESULTS (2017-18)

Percent Proficient

Grade	Not Tested	Tested	Level 1		Level 2		Level 3		Level 4		Proficient (Levels 3 & 4)	
			#	%	#	%	#	%	#	%	#	%
Grade 3	18	276	24	9%	64	23%	151	55%	37	13%	188	68%
Grade 4	46	270	21	8%	76	28%	109	40%	64	24%	173	64%
Grade 5	36	275	37	13%	71	26%	91	33%	76	28%	167	61%
Grade 6	46	250	29	12%	52	21%	55	22%	114	46%	169	68%
Grade 7	47	266	52	20%	65	24%	105	39%	44	17%	149	56%
Grade 8	109	223	10	4%	63	28%	80	36%	70	31%	150	67%
Grades 3-8	302	1,560	173	11%	391	25%	591	38%	405	26%	996	64%

GRADE 3 ELA RESULTS

MEAN SCORE: 608

Subgroup	Not Tested	Tested	Level 1		Level 2		Level 3		Level 4		Proficient (Levels 3 & 4)	
			#	%	#	%	#	%	#	%	#	%
All Students	18	276	24	9%	64	23%	151	55%	37	13%	188	68%
General Education	15	246	17	7%	54	22%	138	56%	37	15%	175	71%
Students with Disabilities	3	30	7	23%	10	33%	13	43%	0	0%	13	43%
Asian or Native Hawaiian/Other Pacific Islander	1	20	4	20%	4	20%	6	30%	6	30%	12	60%
Black or African American	—	4	—	—	—	—	—	—	—	—	—	—
Hispanic or Latino	1	26	1	4%	8	31%	14	54%	3	12%	17	65%
White	15	218	18	8%	50	23%	124	57%	26	12%	150	69%
Multiracial	—	8	—	—	—	—	—	—	—	—	—	—
Small Group Total	1	12	1	8%	2	17%	7	58%	2	17%	9	75%
Female	6	131	10	8%	22	17%	75	57%	24	18%	99	76%
Male	12	145	14	10%	42	29%	76	52%	13	9%	89	61%
English Language Learners	0	8	5	63%	2	25%	1	13%	0	0%	1	13%
Non-English Language Learners	18	268	19	7%	62	23%	150	56%	37	14%	187	70%
Economically Disadvantaged	6	64	11	17%	24	38%	28	44%	1	2%	29	45%
Not Economically Disadvantaged	12	212	13	6%	40	19%	123	58%	36	17%	159	75%
Not Migrant	18	276	24	9%	64	23%	151	55%	37	13%	188	68%
Homeless	—	2	—	—	—	—	—	—	—	—	—	—
Not Homeless	—	274	—	—	—	—	—	—	—	—	—	—
In Foster Care	—	1	—	—	—	—	—	—	—	—	—	—
Not in Foster Care	—	275	—	—	—	—	—	—	—	—	—	—
Parent Not in Armed Forces	18	276	24	9%	64	23%	151	55%	37	13%	188	68%

GRADE 4 ELA RESULTS

MEAN SCORE: 606

Subgroup	Not Tested	Tested	Level 1		Level 2		Level 3		Level 4		Proficient (Levels 3 & 4)	
			#	%	#	%	#	%	#	%	#	%
All Students	46	270	21	8%	76	28%	109	40%	64	24%	173	64%
General Education	25	236	8	3%	57	24%	107	45%	64	27%	171	72%
Students with Disabilities	21	34	13	38%	19	56%	2	6%	0	0%	2	6%
American Indian or Alaska Native	—	1	—	—	—	—	—	—	—	—	—	—
Asian or Native Hawaiian/Other Pacific Islander	3	21	0	0%	6	29%	8	38%	7	33%	15	71%
Black or African American	—	7	—	—	—	—	—	—	—	—	—	—
Hispanic or Latino	3	14	2	14%	5	36%	6	43%	1	7%	7	50%
White	35	216	17	8%	63	29%	83	38%	53	25%	136	63%
Multiracial	4	11	0	0%	0	0%	8	73%	3	27%	11	100%
Small Group Total	1	8	2	25%	2	25%	4	50%	0	0%	4	50%
Female	25	134	7	5%	27	20%	54	40%	46	34%	100	75%
Male	21	136	14	10%	49	36%	55	40%	18	13%	73	54%
English Language Learners	—	3	—	—	—	—	—	—	—	—	—	—
Non-English Language Learners	—	267	—	—	—	—	—	—	—	—	—	—
Economically Disadvantaged	15	72	12	17%	27	38%	24	33%	9	13%	33	46%
Not Economically Disadvantaged	31	198	9	5%	49	25%	85	43%	55	28%	140	71%
Not Migrant	46	270	21	8%	76	28%	109	40%	64	24%	173	64%
Homeless	—	4	—	—	—	—	—	—	—	—	—	—
Not Homeless	—	266	—	—	—	—	—	—	—	—	—	—
Not in Foster Care	46	270	21	8%	76	28%	109	40%	64	24%	173	64%
Parent in Armed Forces	0	5	0	0%	3	60%	1	20%	1	20%	2	40%
Parent Not in Armed Forces	46	265	21	8%	73	28%	108	41%	63	24%	171	65%

GRADE 5 ELA RESULTS

MEAN SCORE: 611

Subgroup	Not Tested	Tested	Level 1		Level 2		Level 3		Level 4		Proficient (Levels 3 & 4)	
			#	%	#	%	#	%	#	%	#	%
All Students	36	275	37	13%	71	26%	91	33%	76	28%	167	61%
General Education	20	245	22	9%	59	24%	90	37%	74	30%	164	67%
Students with Disabilities	16	30	15	50%	12	40%	1	3%	2	7%	3	10%
Asian or Native Hawaiian/Other Pacific Islander	2	21	1	5%	8	38%	5	24%	7	33%	12	57%
Black or African American	2	8	3	38%	5	63%	0	0%	0	0%	0	0%
Hispanic or Latino	2	18	3	17%	5	28%	5	28%	5	28%	10	56%
White	27	218	28	13%	52	24%	76	35%	62	28%	138	63%
Multiracial	3	10	2	20%	1	10%	5	50%	2	20%	7	70%
Female	21	146	14	10%	24	16%	56	38%	52	36%	108	74%
Male	15	129	23	18%	47	36%	35	27%	24	19%	59	46%
English Language Learners	—	3	—	—	—	—	—	—	—	—	—	—
Non-English Language Learners	—	272	—	—	—	—	—	—	—	—	—	—
Economically Disadvantaged	17	68	22	32%	23	34%	16	24%	7	10%	23	34%
Not Economically Disadvantaged	19	207	15	7%	48	23%	75	36%	69	33%	144	70%
Not Migrant	36	275	37	13%	71	26%	91	33%	76	28%	167	61%
Homeless	—	3	—	—	—	—	—	—	—	—	—	—
Not Homeless	—	272	—	—	—	—	—	—	—	—	—	—
In Foster Care	—	1	—	—	—	—	—	—	—	—	—	—
Not in Foster Care	—	274	—	—	—	—	—	—	—	—	—	—
Parent Not in Armed Forces	36	275	37	13%	71	26%	91	33%	76	28%	167	61%

GRADE 6 ELA RESULTS

MEAN SCORE: 609

Subgroup	Not Tested	Tested	Level 1		Level 2		Level 3		Level 4		Proficient (Levels 3 & 4)	
			#	%	#	%	#	%	#	%	#	%
All Students	46	250	29	12%	52	21%	55	22%	114	46%	169	68%
General Education	29	212	9	4%	40	19%	50	24%	113	53%	163	77%
Students with Disabilities	17	38	20	53%	12	32%	5	13%	1	3%	6	16%
Asian or Native Hawaiian/Other Pacific Islander	3	13	1	8%	0	0%	4	31%	8	62%	12	92%
Black or African American	0	8	2	25%	2	25%	2	25%	2	25%	4	50%
Hispanic or Latino	2	14	3	21%	5	36%	4	29%	2	14%	6	43%
White	37	203	21	10%	44	22%	44	22%	94	46%	138	68%
Multiracial	3	12	2	17%	1	8%	1	8%	8	67%	9	75%
Female	21	132	12	9%	25	19%	25	19%	70	53%	95	72%
Male	25	118	17	14%	27	23%	30	25%	44	37%	74	63%
English Language Learners	—	2	—	—	—	—	—	—	—	—	—	—
Non-English Language Learners	—	248	—	—	—	—	—	—	—	—	—	—
Economically Disadvantaged	15	61	16	26%	17	28%	14	23%	14	23%	28	46%
Not Economically Disadvantaged	31	189	13	7%	35	19%	41	22%	100	53%	141	75%
Not Migrant	46	250	29	12%	52	21%	55	22%	114	46%	169	68%
Homeless	—	2	—	—	—	—	—	—	—	—	—	—
Not Homeless	—	248	—	—	—	—	—	—	—	—	—	—
Not in Foster Care	46	250	29	12%	52	21%	55	22%	114	46%	169	68%
Parent Not in Armed Forces	46	250	29	12%	52	21%	55	22%	114	46%	169	68%

GRADE 7 ELA RESULTS

MEAN SCORE: 605

[illegible]

MEAN SCORE: 608

[illegible]

GRADES 3-8 MATHEMATICS SUMMARY RESULTS (2017-18)

Percent Proficient

Grade	Not Tested	Tested	Level 1		Level 2		Level 3		Level 4 & Above		Proficient (Levels 3 & Above)	
			#	%	#	%	#	%	#	%	#	%
Grade 3	22	269	25	9%	40	15%	97	36%	107	40%	204	76%
Grade 4	45	270	36	13%	65	24%	82	30%	87	32%	169	63%
Grade 5	33	277	34	12%	54	19%	97	35%	92	33%	189	68%
Grade 6	49	246	38	15%	49	20%	88	36%	71	29%	159	65%
Grade 7	61	251	36	14%	74	29%	70	28%	71	28%	141	56%
Combined 7	61	251	36	14%	74	29%	70	28%	71	28%	141	56%
Grade 8	153	179	22	12%	74	41%	55	31%	28	16%	83	46%
Regents 8	—	49	0	0%	0	0%	0	0%	49	100%	49	100%
Combined 8	153	228	22	10%	74	32%	55	24%	77	34%	132	58%
Grades 3-8	363	1,541	191	12%	356	23%	489	32%	505	33%	994	65%

Advanced grade 7 and 8 students who take a Regents math test in lieu of the grade 7 and/or 8 math test are reported in the Regents 7 and Regents 8 rows. Combined 7 and Combined 8 are students who took either the grade 7 or 8 math test or a Regents math test in lieu of the grade 7 or 8 math test.

GRADE 3 MATH RESULTS

MEAN SCORE: 610

Subgroup	Not Tested	Tested	Level 1		Level 2		Level 3		Level 4		Proficient (Levels 3 & 4)	
			#	%	#	%	#	%	#	%	#	%
All Students	22	269	25	9%	40	15%	97	36%	107	40%	204	76%
General Education	19	240	15	6%	35	15%	89	37%	101	42%	190	79%
Students with Disabilities	3	29	10	34%	5	17%	8	28%	6	21%	14	48%
Asian or Native Hawaiian/Other Pacific Islander	0	21	2	10%	2	10%	6	29%	11	52%	17	81%
Black or African American	—	3	—	—	—	—	—	—	—	—	—	—
Hispanic or Latino	2	25	4	16%	5	20%	8	32%	8	32%	16	64%
White	19	213	17	8%	33	15%	79	37%	84	39%	163	77%
Multiracial	—	7	—	—	—	—	—	—	—	—	—	—
Small Group Total	1	10	2	20%	0	0%	4	40%	4	40%	8	80%
Female	9	125	12	10%	16	13%	45	36%	52	42%	97	78%
Male	13	144	13	9%	24	17%	52	36%	55	38%	107	74%
English Language Learners	0	8	3	38%	2	25%	2	25%	1	13%	3	38%
Non-English Language Learners	22	261	22	8%	38	15%	95	36%	106	41%	201	77%
Economically Disadvantaged	9	59	14	24%	21	36%	16	27%	8	14%	24	41%
Not Economically Disadvantaged	13	210	11	5%	19	9%	81	39%	99	47%	180	86%
Not Migrant	22	269	25	9%	40	15%	97	36%	107	40%	204	76%
Homeless	—	2	—	—	—	—	—	—	—	—	—	—
Not Homeless	—	267	—	—	—	—	—	—	—	—	—	—
In Foster Care	—	1	—	—	—	—	—	—	—	—	—	—
Not in Foster Care	—	268	—	—	—	—	—	—	—	—	—	—
Parent Not in Armed Forces	22	269	25	9%	40	15%	97	36%	107	40%	204	76%

GRADE 4 MATH RESULTS

MEAN SCORE: 606

Subgroup	Not Tested	Tested	Level 1		Level 2		Level 3		Level 4		Proficient (Levels 3 & 4)	
			#	%	#	%	#	%	#	%	#	%
All Students	45	270	36	13%	65	24%	82	30%	87	32%	169	63%
General Education	26	234	18	8%	54	23%	76	32%	86	37%	162	69%
Students with Disabilities	19	36	18	50%	11	31%	6	17%	1	3%	7	19%
American Indian or Alaska Native	—	1	—	—	—	—	—	—	—	—	—	—
Asian or Native Hawaiian/Other Pacific Islander	3	21	1	5%	3	14%	5	24%	12	57%	17	81%
Black or African American	—	6	—	—	—	—	—	—	—	—	—	—
Hispanic or Latino	2	15	4	27%	4	27%	4	27%	3	20%	7	47%
White	35	216	28	13%	53	25%	68	31%	67	31%	135	63%
Multiracial	4	11	1	9%	2	18%	4	36%	4	36%	8	73%
Small Group Total	1	7	2	29%	3	43%	1	14%	1	14%	2	29%
Female	24	134	17	13%	25	19%	46	34%	46	34%	92	69%
Male	21	136	19	14%	40	29%	36	26%	41	30%	77	57%
English Language Learners	—	3	—	—	—	—	—	—	—	—	—	—
Non-English Language Learners	—	267	—	—	—	—	—	—	—	—	—	—
Economically Disadvantaged	14	72	21	29%	21	29%	17	24%	13	18%	30	42%
Not Economically Disadvantaged	31	198	15	8%	44	22%	65	33%	74	37%	139	70%
Not Migrant	45	270	36	13%	65	24%	82	30%	87	32%	169	63%
Homeless	—	4	—	—	—	—	—	—	—	—	—	—
Not Homeless	—	266	—	—	—	—	—	—	—	—	—	—
Not in Foster Care	45	270	36	13%	65	24%	82	30%	87	32%	169	63%
Parent in Armed Forces	0	5	2	40%	2	40%	1	20%	0	0%	1	20%
Parent Not in Armed Forces	45	265	34	13%	63	24%	81	31%	87	33%	168	63%

GRADE 5 MATH RESULTS

MEAN SCORE: 609

Subgroup	Not Tested	Tested	Level 1		Level 2		Level 3		Level 4		Proficient (Levels 3 & 4)	
			#	%	#	%	#	%	#	%	#	%
All Students	33	277	34	12%	54	19%	97	35%	92	33%	189	68%
General Education	20	244	16	7%	44	18%	92	38%	92	38%	184	75%
Students with Disabilities	13	33	18	55%	10	30%	5	15%	0	0%	5	15%
Asian or Native Hawaiian/Other Pacific Islander	1	22	0	0%	5	23%	8	36%	9	41%	17	77%
Black or African American	1	8	5	63%	1	13%	2	25%	0	0%	2	25%
Hispanic or Latino	2	18	4	22%	3	17%	2	11%	9	50%	11	61%
White	27	218	22	10%	43	20%	82	38%	71	33%	153	70%
Multiracial	2	11	3	27%	2	18%	3	27%	3	27%	6	55%
Female	18	148	19	13%	20	14%	54	36%	55	37%	109	74%
Male	15	129	15	12%	34	26%	43	33%	37	29%	80	62%
English Language Learners	—	3	—	—	—	—	—	—	—	—	—	—
Non-English Language Learners	—	274	—	—	—	—	—	—	—	—	—	—
Economically Disadvantaged	16	68	24	35%	15	22%	17	25%	12	18%	29	43%
Not Economically Disadvantaged	17	209	10	5%	39	19%	80	38%	80	38%	160	77%
Not Migrant	33	277	34	12%	54	19%	97	35%	92	33%	189	68%
Homeless	—	3	—	—	—	—	—	—	—	—	—	—
Not Homeless	—	274	—	—	—	—	—	—	—	—	—	—
In Foster Care	—	1	—	—	—	—	—	—	—	—	—	—
Not in Foster Care	—	276	—	—	—	—	—	—	—	—	—	—
Parent Not in Armed Forces	33	277	34	12%	54	19%	97	35%	92	33%	189	68%

GRADE 6 MATH RESULTS

MEAN SCORE: 607

Subgroup	Not Tested	Tested	Level 1		Level 2		Level 3		Level 4		Proficient (Levels 3 & 4)	
			#	%	#	%	#	%	#	%	#	%
All Students	49	246	38	15%	49	20%	88	36%	71	29%	159	65%
General Education	34	206	10	5%	40	19%	87	42%	69	33%	156	76%
Students with Disabilities	15	40	28	70%	9	23%	1	3%	2	5%	3	8%
Asian or Native Hawaiian/Other Pacific Islander	3	13	1	8%	2	15%	6	46%	4	31%	10	77%
Black or African American	0	8	1	13%	6	75%	1	13%	0	0%	1	13%
Hispanic or Latino	2	13	5	38%	1	8%	5	38%	2	15%	7	54%
White	40	200	29	15%	37	19%	73	37%	61	31%	134	67%
Multiracial	3	12	2	17%	3	25%	3	25%	4	33%	7	58%
Female	23	129	22	17%	29	22%	44	34%	34	26%	78	60%
Male	26	117	16	14%	20	17%	44	38%	37	32%	81	69%
English Language Learners	—	2	—	—	—	—	—	—	—	—	—	—
Non-English Language Learners	—	244	—	—	—	—	—	—	—	—	—	—
Economically Disadvantaged	14	61	22	36%	17	28%	17	28%	5	8%	22	36%
Not Economically Disadvantaged	35	185	16	9%	32	17%	71	38%	66	36%	137	74%
Not Migrant	49	246	38	15%	49	20%	88	36%	71	29%	159	65%
Homeless	—	2	—	—	—	—	—	—	—	—	—	—
Not Homeless	—	244	—	—	—	—	—	—	—	—	—	—
Not in Foster Care	49	246	38	15%	49	20%	88	36%	71	29%	159	65%
Parent Not in Armed Forces	49	246	38	15%	49	20%	88	36%	71	29%	159	65%

GRADE 7 MATH RESULTS

MEAN SCORE: 607

[illegible]

GRADE 8 MATH RESULTS

MEAN SCORE: 608

[illegible]

GRADES 4 & 8 SCIENCE SUMMARY RESULTS (2017-18)

Percent Proficient

Grade	Not Tested	Tested	Level 1		Level 2		Level 3		Level 4		Proficient (Levels 3 & 4)	
			#	%	#	%	#	%	#	%	#	%
Grade 4	35	280	0	0%	9	3%	60	21%	211	75%	271	97%
Grade 8	128	204	7	3%	18	9%	105	51%	74	36%	179	88%
Regents 8	0	53	0	0%	0	0%	2	4%	51	96%	53	100%
Combined 8	128	257	7	3%	18	7%	107	42%	125	49%	232	90%
Grades 4&8	163	537	7	1%	27	5%	167	31%	336	63%	503	94%

Advanced grade 8 students who take a Regents science test in lieu of the grade 8 science test are reported in the Regents 8 row.

GRADE 4 SCIENCE RESULTS

MEAN SCORE: 88

[illegible]

GRADE 8 SCIENCE RESULTS

MEAN SCORE: 78

[illegible]

Annual Regents examination results include those from August, January, and June of the reporting year. If a student takes the same Regents examination multiple times during the reporting year, only the highest score is included in these results.

ANNUAL REGENTS ENGLISH (2017-18)

[illegible]

ANNUAL REGENTS ALGEBRA I (2017-18)

[illegible]

ANNUAL REGENTS GEOMETRY (2017-18)

[illegible]

ANNUAL REGENTS ALGEBRA II (2017-18)

[illegible]

ANNUAL REGENTS LIVING ENVIRONMENT (2017-18)

[illegible]

ANNUAL REGENTS PHYSICAL SETTING/EARTH SCIENCE (2017-18)

[illegible]

ANNUAL REGENTS PHYSICAL SETTING/CHEMISTRY (2017-18)

[illegible]

ANNUAL REGENTS PHYSICAL SETTING/PHYSICS (2017-18)

Subgroup	Tested	Level 1		Level 2		Level 3		Level 4		Proficient (Levels 3 & 4)	
		#	%	#	%	#	%	#	%	#	%
All Students	111	4	4%	6	5%	51	46%	50	45%	101	91%
General Education	111	4	4%	6	5%	51	46%	50	45%	101	91%
Asian or Native Hawaiian/Other Pacific Islander	7	0	0%	2	29%	1	14%	4	57%	5	71%
Black or African American	1	—	—	—	—	—	—	—	—	—	—
Hispanic or Latino	4	—	—	—	—	—	—	—	—	—	—
White	91	3	3%	3	3%	42	46%	43	47%	85	93%
Multiracial	8	0	0%	0	0%	5	63%	3	38%	8	100%
Small Group Total	5	1	20%	1	20%	3	60%	0	0%	3	60%
Female	57	3	5%	4	7%	31	54%	19	33%	50	88%
Male	54	1	2%	2	4%	20	37%	31	57%	51	94%
Non-English Language Learners	111	4	4%	6	5%	51	46%	50	45%	101	91%
Economically Disadvantaged	8	0	0%	3	38%	1	13%	4	50%	5	63%
Not Economically Disadvantaged	103	4	4%	3	3%	50	49%	46	45%	96	93%
Not Migrant	111	4	4%	6	5%	51	46%	50	45%	101	91%
Homeless	1	—	—	—	—	—	—	—	—	—	—
Not Homeless	110	—	—	—	—	—	—	—	—	—	—
Not in Foster Care	111	4	4%	6	5%	51	46%	50	45%	101	91%
Parent Not in Armed Forces	111	4	4%	6	5%	51	46%	50	45%	101	91%

ANNUAL REGENTS GLOBAL HISTORY AND GEOGRAPHY (2017-18)

Subgroup	Tested	Level 1		Level 2		Level 3		Level 4		Proficient (Levels 3 & 4)	
		#	%	#	%	#	%	#	%	#	%
All Students	26	7	27%	6	23%	13	50%	0	0%	13	50%
General Education	10	0	0%	2	20%	8	80%	0	0%	8	80%
Students with Disabilities	16	7	44%	4	25%	5	31%	0	0%	5	31%
Asian or Native Hawaiian/Other Pacific Islander	1	—	—	—	—	—	—	—	—	—	—
Black or African American	3	—	—	—	—	—	—	—	—	—	—
Hispanic or Latino	1	—	—	—	—	—	—	—	—	—	—
White	21	7	33%	4	19%	10	48%	0	0%	10	48%
Small Group Total	5	0	0%	2	40%	3	60%	0	0%	3	60%
Female	13	3	23%	4	31%	6	46%	0	0%	6	46%
Male	13	4	31%	2	15%	7	54%	0	0%	7	54%
Non-English Language Learners	26	7	27%	6	23%	13	50%	0	0%	13	50%
Economically Disadvantaged	15	3	20%	6	40%	6	40%	0	0%	6	40%
Not Economically Disadvantaged	11	4	36%	0	0%	7	64%	0	0%	7	64%
Not Migrant	26	7	27%	6	23%	13	50%	0	0%	13	50%
Not Homeless	26	7	27%	6	23%	13	50%	0	0%	13	50%
Not in Foster Care	26	7	27%	6	23%	13	50%	0	0%	13	50%
Parent Not in Armed Forces	26	7	27%	6	23%	13	50%	0	0%	13	50%

ANNUAL REGENTS TRANSITION EXAM IN GLOBAL HISTORY & GEOGRAPHY (2017-18)

[illegible]

ANNUAL REGENTS U.S. HISTORY & GOVERNMENT (2017-18)

Subgroup	Tested	Level 1		Level 2		Level 3		Level 4		Proficient (Levels 3 & 4)	
		#	%	#	%	#	%	#	%	#	%
All Students	319	7	2%	12	4%	82	26%	218	68%	300	94%
General Education	256	0	0%	5	2%	53	21%	198	77%	251	98%
Students with Disabilities	63	7	11%	7	11%	29	46%	20	32%	49	78%
American Indian or Alaska Native	1	—	—	—	—	—	—	—	—	—	—
Asian or Native Hawaiian/Other Pacific Islander	13	0	0%	0	0%	5	38%	8	62%	13	100%
Black or African American	7	—	—	—	—	—	—	—	—	—	—
Hispanic or Latino	15	0	0%	1	7%	7	47%	7	47%	14	93%
White	266	7	3%	9	3%	67	25%	183	69%	250	94%
Multiracial	17	0	0%	1	6%	1	6%	15	88%	16	94%
Small Group Total	8	0	0%	1	13%	2	25%	5	63%	7	88%
Female	167	4	2%	8	5%	48	29%	107	64%	155	93%
Male	152	3	2%	4	3%	34	22%	111	73%	145	95%
English Language Learners	2	—	—	—	—	—	—	—	—	—	—
Non-English Language Learners	317	—	—	—	—	—	—	—	—	—	—
Economically Disadvantaged	75	4	5%	7	9%	27	36%	37	49%	64	85%
Not Economically Disadvantaged	244	3	1%	5	2%	55	23%	181	74%	236	97%
Not Migrant	319	7	2%	12	4%	82	26%	218	68%	300	94%
Homeless	3	—	—	—	—	—	—	—	—	—	—
Not Homeless	316	—	—	—	—	—	—	—	—	—	—
Not in Foster Care	319	7	2%	12	4%	82	26%	218	68%	300	94%
Parent Not in Armed Forces	319	7	2%	12	4%	82	26%	218	68%	300	94%

2014 TOTAL COHORT RESULTS IN REGENTS ENGLISH LANGUAGE ARTS

A High School Cohort consists of all students who first enter grade 9 anywhere or, in the case of ungraded students with disabilities, reach their seventeenth birthday in a particular school year (July 1 - June 30). The "year" used to identify the cohort is the year in which the July 1 - December 31 dates fall. Results are reported four years after these students first enter grade 9.

[illegible]

2014 TOTAL COHORT RESULTS IN REGENTS MATHEMATICS

A High School Cohort consists of all students who first enter grade 9 anywhere or, in the case of ungraded students with disabilities, reach their seventeenth birthday in a particular school year (July 1 - June 30). The "year" used to identify the cohort is the year in which the July 1 - December 31 dates fall. Results are reported four years after these students first enter grade 9.

[illegible]

2014 TOTAL COHORT RESULTS IN REGENTS SCIENCE

A High School Cohort consists of all students who first enter grade 9 anywhere or, in the case of ungraded students with disabilities, reach their seventeenth birthday in a particular school year (July 1 - June 30). The "year" used to identify the cohort is the year in which the July 1 - December 31 dates fall. Results are reported four years after these students first enter grade 9.

[illegible]

2014 TOTAL COHORT RESULTS IN REGENTS GLOBAL HISTORY AND GEOGRAPHY

A High School Cohort consists of all students who first enter grade 9 anywhere or, in the case of ungraded students with disabilities, reach their seventeenth birthday in a particular school year (July 1 - June 30). The "year" used to identify the cohort is the year in which the July 1 - December 31 dates fall. Results are reported four years after these students first enter grade 9.

[illegible]

2014 TOTAL COHORT RESULTS IN REGENTS U.S. HISTORY AND GOVERNMENT

A High School Cohort consists of all students who first enter grade 9 anywhere or, in the case of ungraded students with disabilities, reach their seventeenth birthday in a particular school year (July 1 - June 30). The "year" used to identify the cohort is the year in which the July 1 - December 31 dates fall. Results are reported four years after these students first enter grade 9.

[illegible]

NEW YORK STATE ENGLISH AS A SECOND LANGUAGE ACHIEVEMENT TEST (2017-18)

New York State English as a Second Language Achievement Tests (NYSESLAT) are administered in grades K through 12 to all English Language Learners (ELLs). ELLs are students who, by reason of foreign birth or ancestry, speak or understand a language other than English and speak or understand little or no English, and require support to become proficient in English and are identified pursuant to Section 154.3 of Commissioner's Regulations.

Grade	Not Tested	Tested	Entering	Emerging	Transitioning	Expanding	Commanding
Kindergarten	0	6	0%	17%	17%	33%	33%
Grade 1	0	7	0%	14%	29%	43%	14%
Grade 2	—	4	—	—	—	—	—
Grade 3	0	8	0%	13%	25%	50%	13%
Grade 4	—	3	—	—	—	—	—
Grade 5	—	3	—	—	—	—	—
Grade 6	—	2	—	—	—	—	—
Grade 7	—	2	—	—	—	—	—
Grade 8	—	1	—	—	—	—	—
Grade 9	—	1	—	—	—	—	—
Grade 10	—	1	—	—	—	—	—
Grade 11	—	2	—	—	—	—	—

NEW YORK STATE ALTERNATE ASSESSMENT (2017-18)

New York State Alternate Assessments (NYSAA) are administered to ungraded students with severe cognitive disabilities whose ages are equivalent to graded students in grades 3 through 8 and high school level.

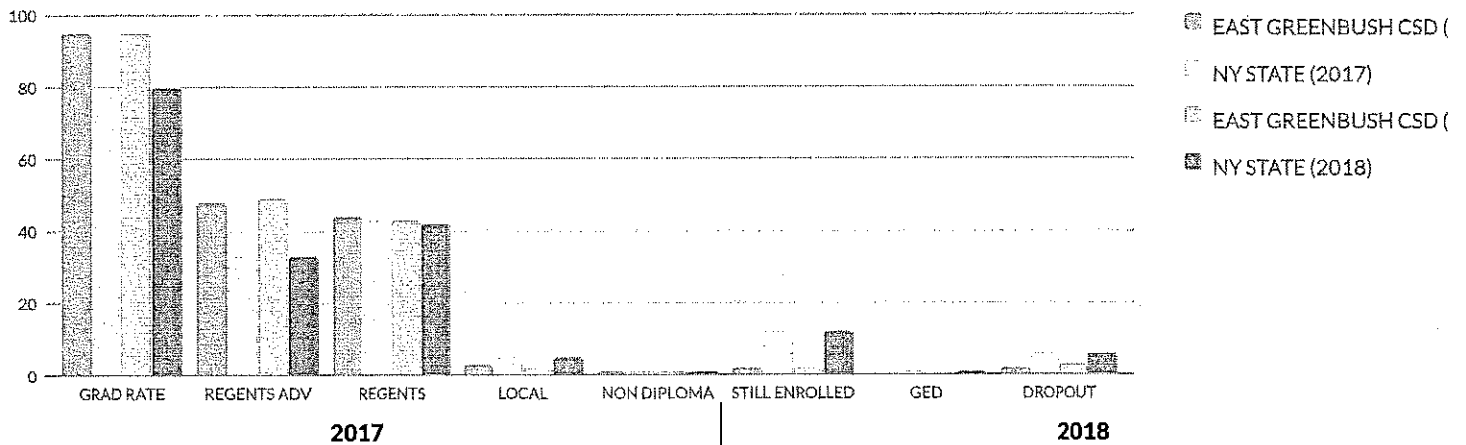
Grade/Subject	Not Tested	Tested	Level 1	Level 2	Level 3	Level 4
Grade 3 ELA	—	1	—	—	—	—
Grade 3 Math	—	1	—	—	—	—
Grade 4 ELA	0	5	0	1	3	1
Grade 4 Math	0	5	1	0	3	1
Grade 4 Science	0	5	1	0	3	1
Grade 5 ELA	1	5	0	0	3	2
Grade 5 Math	1	5	0	0	5	0
Grade 6 ELA	—	4	—	—	—	—
Grade 6 Math	—	4	—	—	—	—
Grade 7 ELA	0	9	1	0	6	2
Grade 7 Math	0	9	0	1	8	0
Grade 8 ELA	—	1	—	—	—	—
Grade 8 Math	—	1	—	—	—	—
Grade 8 Science	—	1	—	—	—	—
Secondary-Level ELA	—	4	—	—	—	—
Secondary-Level Math	—	4	—	—	—	—
Secondary-Level Science	—	4	—	—	—	—

EAST GREENBUSH CSD GRADUATION RATE DATA 4 YEAR OUTCOME AS OF JUNE

Graduation Rate Data are reported for a 9th grade cohort, as of the 4th year of high school - June. The Graduation Rate Data of high school as of the 4th year-August, the 5th year-June, and the 6th year-June are also calculated and available using the "Filter this data" function, below

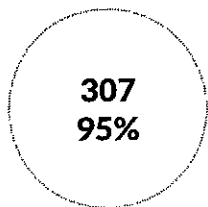
Data is reported by educational institutions to the State Education Department throughout the school year and available for verification by districts until the close of the state data warehouse in August. District superintendents certify data is accurate in September. For the most updated information, please contact the school district.

Complete information on the types of diploma credentials, which can be earned and the criteria for each, see: Diploma Requirements.



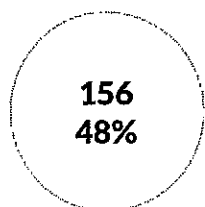
2017
ALL STUDENTS

GRAD RATE



REGENTS DIPLO...

REGENTS WITH ...



LOCAL DIPLOMA

TOTAL STUDENTS IN COHORT: 322

NON DIPLOMA CRED

2	1%
---	----

GED TRANSFER

0	0%
---	----

STILL ENROLLED

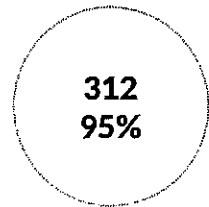
8	2%
---	----

DROPOUT

5	2%
---	----

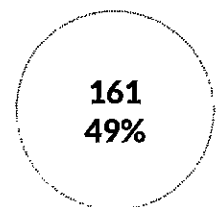
2018
ALL STUDENTS

GRAD RATE



REGENTS DIPLO...

REGENTS WITH ...



LOCAL DIPLOMA

TOTAL STUDENTS IN COHORT: 329

NON DIPLOMA CRED

2	1%
---	----

GED TRANSFER

0	0%
---	----

STILL ENROLLED

6	2%
---	----

DROPOUT

9	3%
---	----

BY GENDER

FEMALE

GRAD RATE

REGENTS WITH ...

REGENTS DIPLO...

LOCAL DIPLOMA

TOTAL STUDENTS IN COHORT: 153

NON DIPLOMA CRED

STILL ENROLLED

0	0%
---	----

3	2%
---	----

GED TRANSFER

DROPOUT

0	0%
---	----

2	1%
---	----

MALE

GRAD RATE

REGENTS WITH ...

REGENTS DIPLO...

LOCAL DIPLOMA

TOTAL STUDENTS IN COHORT: 169

NON DIPLOMA CRED

STILL ENROLLED

FEMALE

GRAD RATE

REGENTS WITH ...

REGENTS DIPLO...

LOCAL DIPLOMA

TOTAL STUDENTS IN COHORT: 150

NON DIPLOMA CRED

STILL ENROLLED

0	0%
---	----

2	1%
---	----

GED TRANSFER

DROPOUT

0	0%
---	----

6	4%
---	----

MALE

GRAD RATE

REGENTS WITH ...

REGENTS DIPLO...

LOCAL DIPLOMA

TOTAL STUDENTS IN COHORT: 179

NON DIPLOMA CRED

STILL ENROLLED

2	1%
---	----

GED TRANSFER

0	0%
---	----

5	3%
---	----

DROPOUT

3	2%
---	----

2	1%
---	----

GED TRANSFER

0	0%
---	----

4	2%
---	----

DROPOUT

3	2%
---	----

BY ETHNICITY

MULTIRACIAL

GRAD RATE

REGENTS WITH ...

REGENTS DIPLO...

LOCAL DIPLOMA

TOTAL STUDENTS IN COHORT: 15

NON DIPLOMA CRED

STILL ENROLLED

0	0%
---	----

1	7%
---	----

GED TRANSFER

DROPOUT

0	0%
---	----

0	0%
---	----

AMERICAN INDIAN OR ALASKA NATIVE

GRAD RATE

REGENTS WITH ...

REGENTS DIPLO...

LOCAL DIPLOMA

TOTAL STUDENTS: 0

NON DIPLOMA CRED

STILL ENROLLED

MULTIRACIAL

GRAD RATE

REGENTS WITH ...

REGENTS DIPLO...

LOCAL DIPLOMA

TOTAL STUDENTS IN COHORT: 15

NON DIPLOMA CRED

STILL ENROLLED

0	0%
---	----

1	7%
---	----

GED TRANSFER

DROPOUT

0	0%
---	----

2	13%
---	-----

AMERICAN INDIAN OR ALASKA NATIVE

GRAD RATE

REGENTS WITH ...

REGENTS DIPLO...

LOCAL DIPLOMA

TOTAL STUDENTS: 0

NON DIPLOMA CRED

STILL ENROLLED

0	0%
---	----

GED TRANSFER

0	0%
---	----

0	0%
---	----

DROPOUT

0	0%
---	----

0	0%
---	----

GED TRANSFER

0	0%
---	----

0	0%
---	----

DROPOUT

0	0%
---	----

ASIAN OR NATIVE HAWAIIAN/OTHER PACIFIC ISLANDER

GRAD RATE

REGENTS WITH ...

REGENTS DIPLO...

LOCAL DIPLOMA

TOTAL STUDENTS IN COHORT: 13

NON DIPLOMA CRED

STILL ENROLLED

0	0%
---	----

0	0%
---	----

GED TRANSFER

DROPOUT

0	0%
---	----

0	0%
---	----

WHITE

GRAD RATE

REGENTS WITH ...

REGENTS DIPLO...

LOCAL DIPLOMA

TOTAL STUDENTS IN COHORT: 274

NON DIPLOMA CRED

STILL ENROLLED

2	1%
---	----

5	2%
---	----

GED TRANSFER

DROPOUT

ASIAN OR NATIVE HAWAIIAN/OTHER PACIFIC ISLANDER

GRAD RATE

REGENTS WITH ...

REGENTS DIPLO...

LOCAL DIPLOMA

TOTAL STUDENTS IN COHORT: 14

NON DIPLOMA CRED

STILL ENROLLED

0	0%
---	----

0	0%
---	----

GED TRANSFER

DROPOUT

0	0%
---	----

0	0%
---	----

WHITE

GRAD RATE

REGENTS WITH ...

REGENTS DIPLO...

LOCAL DIPLOMA

TOTAL STUDENTS IN COHORT: 263

NON DIPLOMA CRED

STILL ENROLLED

1	0%
---	----

3	1%
---	----

GED TRANSFER

DROPOUT

0	0%
---	----

5	2%
---	----

0	0%
---	----

7	3%
---	----

BLACK OR AFRICAN AMERICAN

GRAD RATE

REGENTS WITH...

REGENTS DIPLO...

LOCAL DIPLOMA

TOTAL STUDENTS IN COHORT: 8

NON DIPLOMA CRED

STILL ENROLLED

0	0%
---	----

1	13%
---	-----

GED TRANSFER

DROPOUT

0	0%
---	----

0	0%
---	----

HISPANIC OR LATINO

GRAD RATE

REGENTS WITH...

REGENTS DIPLO...

LOCAL DIPLOMA

TOTAL STUDENTS IN COHORT: 12

NON DIPLOMA CRED

STILL ENROLLED

0	0%
---	----

1	8%
---	----

GED TRANSFER

DROPOUT

BLACK OR AFRICAN AMERICAN

GRAD RATE

REGENTS WITH...

REGENTS DIPLO...

LOCAL DIPLOMA

TOTAL STUDENTS IN COHORT: 11

NON DIPLOMA CRED

STILL ENROLLED

0	0%
---	----

2	18%
---	-----

GED TRANSFER

DROPOUT

0	0%
---	----

0	0%
---	----

HISPANIC OR LATINO

GRAD RATE

REGENTS WITH...

REGENTS DIPLO...

LOCAL DIPLOMA

TOTAL STUDENTS IN COHORT: 26

NON DIPLOMA CRED

STILL ENROLLED

1	4%
---	----

0	0%
---	----

GED TRANSFER

DROPOUT

0	0%
---	----

0	0%
---	----

0	0%
---	----

0	0%
---	----

OTHER GROUPS

GENERAL-EDUCATION STUDENTS

GRAD RATE

REGENTS WITH ...

REGENTS DIPLO...

LOCAL DIPLOMA

TOTAL STUDENTS IN COHORT: 266

NON DIPLOMA CRED

STILL ENROLLED

0

0%

3

1%

GED TRANSFER

DROPOUT

0

0%

2

1%

STUDENTS WITH DISABILITIES

GRAD RATE

REGENTS WITH ...

REGENTS DIPLO...

LOCAL DIPLOMA

TOTAL STUDENTS IN COHORT: 56

NON DIPLOMA CRED

STILL ENROLLED

GENERAL-EDUCATION STUDENTS

GRAD RATE

REGENTS WITH ...

REGENTS DIPLO...

LOCAL DIPLOMA

TOTAL STUDENTS IN COHORT: 275

NON DIPLOMA CRED

STILL ENROLLED

0

0%

3

1%

GED TRANSFER

DROPOUT

0

0%

7

3%

STUDENTS WITH DISABILITIES

GRAD RATE

REGENTS WITH ...

REGENTS DIPLO...

LOCAL DIPLOMA

TOTAL STUDENTS IN COHORT: 54

NON DIPLOMA CRED

STILL ENROLLED

2	4%
GED TRANSFER	
0	0%

5	9%
DROPOUT	
3	5%

2	4%
GED TRANSFER	
0	0%

3	6%
DROPOUT	
2	4%

NON-ENGLISH LANGUAGE LEARNERS

GRAD RATE

REGENTS WITH...

REGENTS DIPLO...

LOCAL DIPLOMA

TOTAL STUDENTS: —

NON DIPLOMA CRED

STILL ENROLLED

—	—
---	---

—	—
---	---

GED TRANSFER

DROPOUT

—	—
---	---

—	—
---	---

ENGLISH LANGUAGE LEARNERS

GRAD RATE

REGENTS WITH...

REGENTS DIPLO...

LOCAL DIPLOMA

TOTAL STUDENTS: —

NON DIPLOMA CRED

STILL ENROLLED

—	—
---	---

—	—
---	---

GED TRANSFER

DROPOUT

NON-ENGLISH LANGUAGE LEARNERS

GRAD RATE

REGENTS WITH...

REGENTS DIPLO...

LOCAL DIPLOMA

TOTAL STUDENTS: —

NON DIPLOMA CRED

STILL ENROLLED

—	—
---	---

—	—
---	---

GED TRANSFER

DROPOUT

—	—
---	---

—	—
---	---

ENGLISH LANGUAGE LEARNERS

GRAD RATE

REGENTS WITH...

REGENTS DIPLO...

LOCAL DIPLOMA

TOTAL STUDENTS: —

NON DIPLOMA CRED

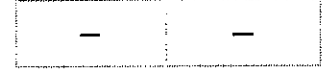
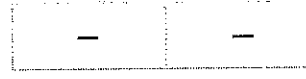
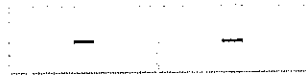
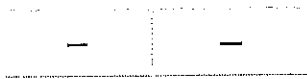
STILL ENROLLED

—	—
---	---

—	—
---	---

GED TRANSFER

DROPOUT



NOT ECONOMICALLY DISADVANTAGED

GRAD RATE

REGENTS WITH ...

REGENTS DIPLO...

LOCAL DIPLOMA

TOTAL STUDENTS IN COHORT: 258

NON DIPLOMA CRED

STILL ENROLLED

2	1%
---	----

5	2%
---	----

GED TRANSFER

DROPOUT

0	0%
---	----

3	1%
---	----

ECONOMICALLY DISADVANTAGED

GRAD RATE

REGENTS WITH ...

REGENTS DIPLO...

LOCAL DIPLOMA

TOTAL STUDENTS IN COHORT: 64

NON DIPLOMA CRED

STILL ENROLLED

0	0%
---	----

3	5%
---	----

GED TRANSFER

DROPOUT

NOT ECONOMICALLY DISADVANTAGED

GRAD RATE

REGENTS WITH ...

REGENTS DIPLO...

LOCAL DIPLOMA

TOTAL STUDENTS IN COHORT: 267

NON DIPLOMA CRED

STILL ENROLLED

0	0%
---	----

1	0%
---	----

GED TRANSFER

DROPOUT

0	0%
---	----

2	1%
---	----

ECONOMICALLY DISADVANTAGED

GRAD RATE

REGENTS WITH ...

REGENTS DIPLO...

LOCAL DIPLOMA

TOTAL STUDENTS IN COHORT: 62

NON DIPLOMA CRED

STILL ENROLLED

2	3%
---	----

5	8%
---	----

GED TRANSFER

DROPOUT

0	0%
---	----

2	3%
---	----

0	0%
---	----

7	11%
---	-----

NOT MIGRANT

GRAD RATE

REGENTS WITH ...

REGENTS DIPLO...

LOCAL DIPLOMA

TOTAL STUDENTS: —

NON DIPLOMA CRED

STILL ENROLLED

—	—
---	---

—	—
---	---

GED TRANSFER

DROPOUT

—	—
---	---

—	—
---	---

MIGRANT

GRAD RATE

REGENTS WITH ...

REGENTS DIPLO...

LOCAL DIPLOMA

TOTAL STUDENTS: —

NON DIPLOMA CRED

STILL ENROLLED

—	—
---	---

—	—
---	---

GED TRANSFER

DROPOUT

NOT MIGRANT

GRAD RATE

REGENTS WITH ...

REGENTS DIPLO...

LOCAL DIPLOMA

TOTAL STUDENTS: —

NON DIPLOMA CRED

STILL ENROLLED

—	—
---	---

—	—
---	---

GED TRANSFER

DROPOUT

—	—
---	---

—	—
---	---

MIGRANT

GRAD RATE

REGENTS WITH ...

REGENTS DIPLO...

LOCAL DIPLOMA

TOTAL STUDENTS: —

NON DIPLOMA CRED

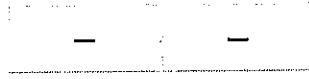
STILL ENROLLED

—	—
---	---

—	—
---	---

GED TRANSFER

DROPOUT



© COPYRIGHT NEW YORK STATE EDUCATION DEPARTMENT, ALL RIGHTS RESERVED.

THIS DOCUMENT WAS CREATED ON: APRIL 29, 2019, 11:00 AM EST

EAST GREENBUSH CSD GRADUATION PATHWAYS DATA

The Board of Regents approved regulations establishing multiple, comparably rigorous assessment pathways to graduation for all students. The recently approved regulations recognize the importance of engaging students' interests in rigorous and relevant academic programs in the Arts; Languages other than English (LOTE)/Biliteracy; Career and Technical Education (CTE); Humanities; Science, Technology, Engineering and Mathematics (STEM); and Career Developmental Occupational Studies (CDOS). The revised regulation allows students to use a passing score on an approved pathway assessment or successful completion of program requirements for the CDOS credential toward meeting the assessment requirements for graduation.

Complete information on the types of diploma credentials which can be earned and the criteria for each.

Additional information on Graduation Pathways can be found on the Curriculum and Instruction site.

PATHWAYS FOR ALL STUDENTS

TOTAL GRADUATES IN COHORT: 312

HUMANITIES

312	100%
------------	-------------

ARTS

0	0%
----------	-----------

MATH

0	0%
----------	-----------

CAREER DEVELOPMENT AND OCCUPATIONAL STUDIES

HUMANITIES ALTERNATIVE

0	0%
----------	-----------

CAREER AND TECHNICAL EDUCATION

0	0%
----------	-----------

SCIENCE

0	0%
----------	-----------

LANGUAGES OTHER THAN ENGLISH

0

0%

0

0%

PATHWAYS FOR FEMALE STUDENTS

TOTAL GRADUATES IN COHORT: 142

HUMANITIES

142

100%

HUMANITIES ALTERNATIVE

0

0%

ARTS

0

0%

**CAREER AND TECHNICAL
EDUCATION**

0

0%

MATH

0

0%

SCIENCE

0

0%

**CAREER DEVELOPMENT AND
OCCUPATIONAL STUDIES**

0

0%

**LANGUAGES OTHER THAN
ENGLISH**

0

0%

PATHWAYS FOR MALE STUDENTS

TOTAL GRADUATES IN COHORT: 170

HUMANITIES

170

100%

HUMANITIES ALTERNATIVE

0

0%

ARTS

0

0%

**CAREER AND TECHNICAL
EDUCATION**

0

0%

MATH

0	0%
---	----

**CAREER DEVELOPMENT AND
OCCUPATIONAL STUDIES**

0	0%
---	----

SCIENCE

0	0%
---	----

**LANGUAGES OTHER THAN
ENGLISH**

0	0%
---	----

PATHWAYS FOR MULTIRACIAL STUDENTS**TOTAL GRADUATES IN COHORT: 12****HUMANITIES**

12	100%
----	------

HUMANITIES ALTERNATIVE

0	0%
---	----

ARTS

0	0%
---	----

**CAREER AND TECHNICAL
EDUCATION**

0	0%
---	----

MATH

0	0%
---	----

**CAREER DEVELOPMENT AND
OCCUPATIONAL STUDIES**

0	0%
---	----

SCIENCE

0	0%
---	----

**LANGUAGES OTHER THAN
ENGLISH**

0	0%
---	----

PATHWAYS FOR AMERICAN INDIAN OR ALASKA NATIVE STUDENTS**TOTAL GRADUATES IN COHORT: 0****HUMANITIES**

0	0%
---	----

HUMANITIES ALTERNATIVE

0	0%
---	----

ARTS**0****0%****CAREER AND TECHNICAL
EDUCATION****0****0%****MATH****0****0%****SCIENCE****0****0%****CAREER DEVELOPMENT AND
OCCUPATIONAL STUDIES****0****0%****LANGUAGES OTHER THAN
ENGLISH****0****0%****PATHWAYS FOR ASIAN OR NATIVE HAWAIIAN/OTHER PACIFIC ISLANDER
STUDENTS****TOTAL GRADUATES IN COHORT: 14****HUMANITIES****14****100%****HUMANITIES ALTERNATIVE****0****0%****ARTS****0****0%****CAREER AND TECHNICAL
EDUCATION****0****0%****MATH****0****0%****SCIENCE****0****0%****CAREER DEVELOPMENT AND
OCCUPATIONAL STUDIES****0****0%****LANGUAGES OTHER THAN
ENGLISH****0****0%****PATHWAYS FOR WHITE STUDENTS**

TOTAL GRADUATES IN COHORT: 252

HUMANITIES

252

100%

HUMANITIES ALTERNATIVE

0

0%

ARTS

0

0%

**CAREER AND TECHNICAL
EDUCATION**

0

0%

MATH

0

0%

SCIENCE

0

0%

**CAREER DEVELOPMENT AND
OCCUPATIONAL STUDIES**

0

0%

**LANGUAGES OTHER THAN
ENGLISH**

0

0%

PATHWAYS FOR BLACK OR AFRICAN AMERICAN STUDENTS

TOTAL GRADUATES IN COHORT: 9

HUMANITIES

9

100%

HUMANITIES ALTERNATIVE

0

0%

ARTS

0

0%

**CAREER AND TECHNICAL
EDUCATION**

0

0%

MATH

0

0%

SCIENCE

0

0%

**CAREER DEVELOPMENT AND
OCCUPATIONAL STUDIES**

0	0%
---	----

**LANGUAGES OTHER THAN
ENGLISH**

0	0%
---	----

PATHWAYS FOR HISPANIC OR LATINO STUDENTS

TOTAL GRADUATES IN COHORT: 25

HUMANITIES

25	100%
----	------

HUMANITIES ALTERNATIVE

0	0%
---	----

ARTS

0	0%
---	----

**CAREER AND TECHNICAL
EDUCATION**

0	0%
---	----

MATH

0	0%
---	----

SCIENCE

0	0%
---	----

**CAREER DEVELOPMENT AND
OCCUPATIONAL STUDIES**

0	0%
---	----

**LANGUAGES OTHER THAN
ENGLISH**

0	0%
---	----

PATHWAYS FOR GENERAL-EDUCATION STUDENTS

TOTAL GRADUATES IN COHORT: 265

HUMANITIES

265	100%
-----	------

HUMANITIES ALTERNATIVE

0	0%
---	----

ARTS

0	0%
---	----

**CAREER AND TECHNICAL
EDUCATION**

0	0%
---	----

MATH

0	0%
---	----

CAREER DEVELOPMENT AND OCCUPATIONAL STUDIES

0	0%
---	----

SCIENCE

0	0%
---	----

LANGUAGES OTHER THAN ENGLISH

0	0%
---	----

PATHWAYS FOR STUDENTS WITH DISABILITIES

TOTAL GRADUATES IN COHORT: 47

HUMANITIES

47	100%
----	------

ARTS

0	0%
---	----

MATH

0	0%
---	----

CAREER DEVELOPMENT AND OCCUPATIONAL STUDIES

0	0%
---	----

HUMANITIES ALTERNATIVE

0	0%
---	----

CAREER AND TECHNICAL EDUCATION

0	0%
---	----

SCIENCE

0	0%
---	----

LANGUAGES OTHER THAN ENGLISH

0	0%
---	----

PATHWAYS FOR NON-ENGLISH LANGUAGE LEARNERS STUDENTS

TOTAL GRADUATES IN COHORT: 312

HUMANITIES

312	100%
-----	------

ARTS

0	0%
---	----

MATH

0	0%
---	----

CAREER DEVELOPMENT AND OCCUPATIONAL STUDIES

0	0%
---	----

HUMANITIES ALTERNATIVE

0	0%
---	----

CAREER AND TECHNICAL EDUCATION

0	0%
---	----

SCIENCE

0	0%
---	----

LANGUAGES OTHER THAN ENGLISH

0	0%
---	----

PATHWAYS FOR ENGLISH LANGUAGE LEARNERS STUDENTS

TOTAL GRADUATES IN COHORT: 0

HUMANITIES

0	0%
---	----

ARTS

0	0%
---	----

MATH

0	0%
---	----

CAREER DEVELOPMENT AND OCCUPATIONAL STUDIES

HUMANITIES ALTERNATIVE

0	0%
---	----

CAREER AND TECHNICAL EDUCATION

0	0%
---	----

SCIENCE

0	0%
---	----

LANGUAGES OTHER THAN ENGLISH

0	0%
---	----

0	0%
---	----

PATHWAYS FOR NOT ECONOMICALLY DISADVANTAGED STUDENTS

TOTAL GRADUATES IN COHORT: 264

HUMANITIES

264	100%
-----	------

HUMANITIES ALTERNATIVE

0	0%
---	----

ARTS

0	0%
---	----

**CAREER AND TECHNICAL
EDUCATION**

0	0%
---	----

MATH

0	0%
---	----

SCIENCE

0	0%
---	----

**CAREER DEVELOPMENT AND
OCCUPATIONAL STUDIES**

0	0%
---	----

**LANGUAGES OTHER THAN
ENGLISH**

0	0%
---	----

PATHWAYS FOR ECONOMICALLY DISADVANTAGED STUDENTS

TOTAL GRADUATES IN COHORT: 48

HUMANITIES

48	100%
----	------

HUMANITIES ALTERNATIVE

0	0%
---	----

ARTS

0	0%
---	----

**CAREER AND TECHNICAL
EDUCATION**

0	0%
---	----

MATH

0	0%
---	----

**CAREER DEVELOPMENT AND
OCCUPATIONAL STUDIES**

0	0%
---	----

SCIENCE

0	0%
---	----

**LANGUAGES OTHER THAN
ENGLISH**

0	0%
---	----

PATHWAYS FOR NOT MIGRANT STUDENTS**TOTAL GRADUATES IN COHORT: 312****HUMANITIES**

312	100%
-----	------

ARTS

0	0%
---	----

MATH

0	0%
---	----

**CAREER DEVELOPMENT AND
OCCUPATIONAL STUDIES**

0	0%
---	----

HUMANITIES ALTERNATIVE

0	0%
---	----

**CAREER AND TECHNICAL
EDUCATION**

0	0%
---	----

SCIENCE

0	0%
---	----

**LANGUAGES OTHER THAN
ENGLISH**

0	0%
---	----

PATHWAYS FOR MIGRANT STUDENTS**TOTAL GRADUATES IN COHORT: 0****HUMANITIES**

0	0%
---	----

HUMANITIES ALTERNATIVE

0	0%
---	----

ARTS

0

0%

CAREER AND TECHNICAL EDUCATION

0

0%

MATH

0

0%

SCIENCE

0

0%

CAREER DEVELOPMENT AND OCCUPATIONAL STUDIES

0

0%

LANGUAGES OTHER THAN ENGLISH

0

0%

© COPYRIGHT NEW YORK STATE EDUCATION DEPARTMENT, ALL RIGHTS RESERVED.

THIS DOCUMENT WAS CREATED ON: APRIL 29, 2019, 11:02 AM EST

EAST GREENBUSH CSD - STUDENT AND EDUCATOR REPORT [2017 - 18]

The Student and Educator Report provides information to the public on students eligible for free or reduced-price lunch; student attendance and suspensions; and school/district average class size, staff counts, and teacher attendance and turnover. Knowledge gained from this report can be used to improve instruction and services to students.

STUDENT DATA

FREE AND REDUCED-PRICE LUNCH

Eligible for Free Lunch		Eligible for Reduced-Price Lunch	
Number	Percent	Number	Percent
809	20%	127	3%

© COPYRIGHT NEW YORK STATE EDUCATION DEPARTMENT, ALL RIGHTS RESERVED.

THIS DOCUMENT WAS CREATED ON: APRIL 29, 2019, 11:02 AM EST